

WALL INDEX™
VINYL WALL COVERING

WALL INDEX™
VINYL WALL COVERING

52"-54" FABRIC BACKED
Designed in USA

52"-54" FABRIC BACKED
Designed in USA





WALL INDEX™
52"/54" VINYL WALLCOVERINGS

REMATT

WALL INDEX™ VINYL WALL COVERINGS

REMATT

Product Specifications

- Type II, Medium Weight, Class A, Vinyl Coated
- Fabric Backed Wallcovering
- Width : 52"/54" (132 cm/137cm)
- Total Weight : 15.0.oz./lin.yard - 466 gr/lin-meter
- Backing : Woven Cotton Backing
- Fire Rated : Class - "A" Tested In Accordance
ASTM E-84 Tunnel Test
- Tensile Breaking Strength : 80X75 Pounds
- Flame Spread : 20
- Smoke Developed : 25
- Pattern Match : Random Match
- Packaging : 50 Meter Bolts



US Classification : ASTM-E84 Class - A

CHN Classification : GB8624-2012: Class B

EU Classification : EN 15102 : 2007+A1 : 2011



Anti Microbial Features:

Water based environmentally friendly inks, free of Cadmium, Mercury and Ozone depleting chemicals.

Wall Surface Preparations:

The wall surface must be clean, smooth, stable, even and all in one colour before hanging wallpaper. The wall should be dry enough with a maximum of 8% water absorption. If the other side of the wall is in a bathroom, the surface of the wall must be water proof. If the wall is wet of mouldy, the mould needs to be eliminated completely by brushing fungicide on it which will also make it moisture proof.

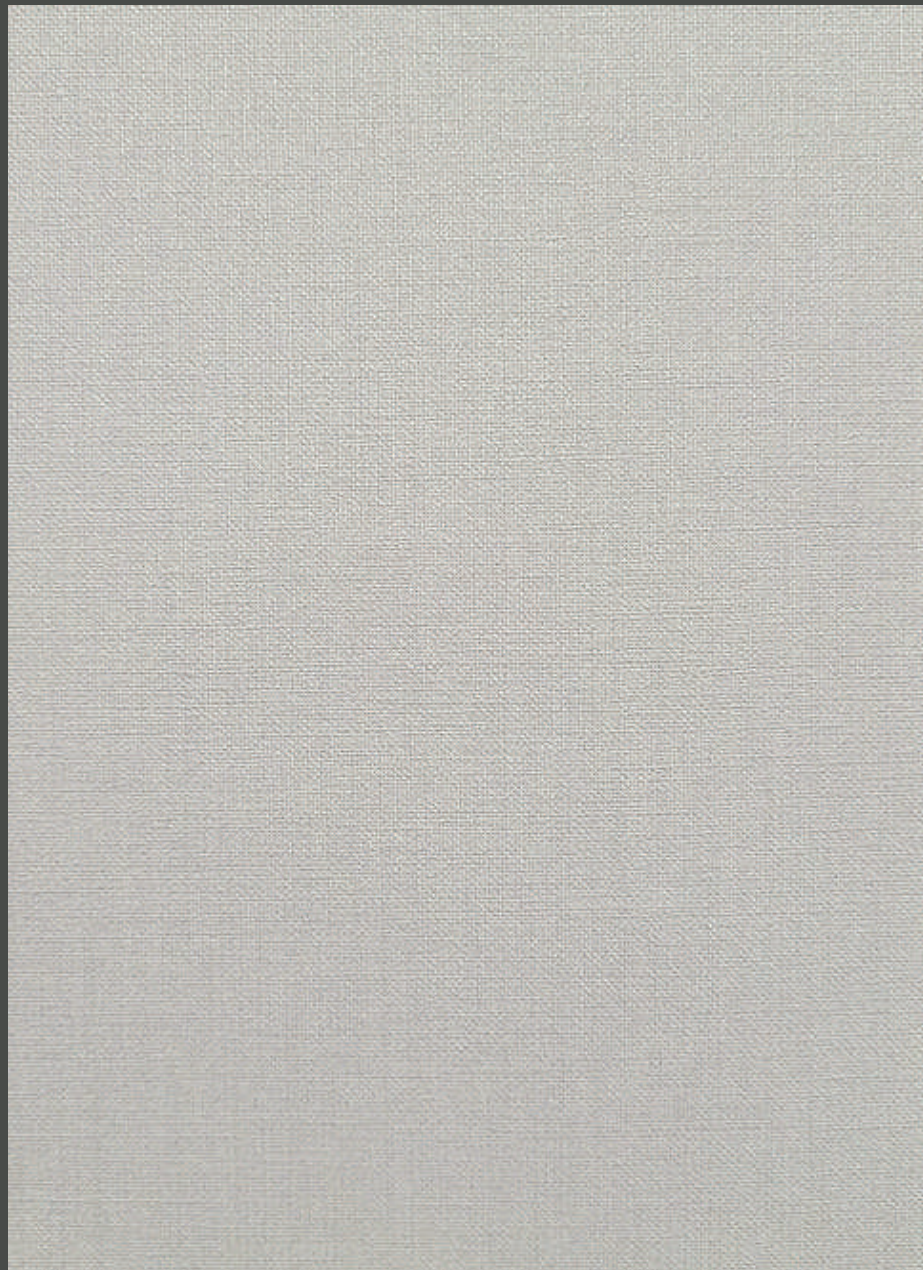
Adhesive Applying:

Apply adhesive evenly to the back of the wallpaper, fold and leave it for 5-10 minutes, and let the cloth absorb the adhesive completely. For heavy wallpaper, you can also brush adhesive directly to the wall and wait 5-10 minutes before hanging.

Hanging :

Start to hang from a corner and use a plumb line to ensure the wallpaper is straight and not leaning to one side, if the corner you started from is not straight, use a wiper board to smooth the wallpaper evenly and gently to remove any bubbles. For heavier wallpaper, use a strong glue for the seams. When applying the second strip, it should be applied to edge of the previous one and make sure the design is matched. For plain wallpapers there is no need to match. Overlap the two strips and use a sharp knife to cut in the middle. To make the cutting line straight, use a steel ruler.

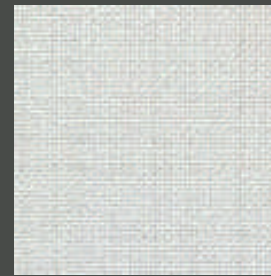




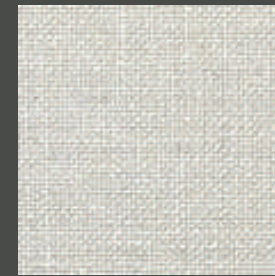
W1333-1

REMATT

ENVIRONMENTAL WALL COVERING



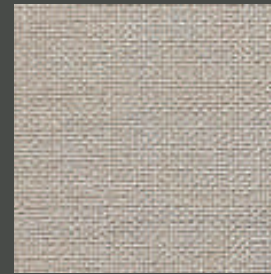
W1333-2



W1333-3



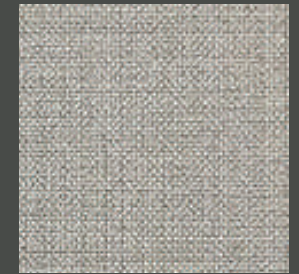
W1333-4



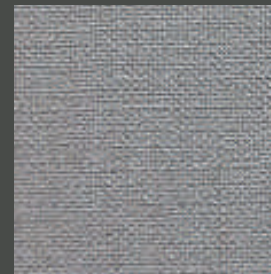
W1333-5



W1333-6



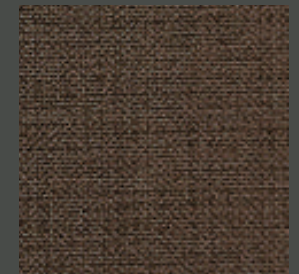
W1333-7



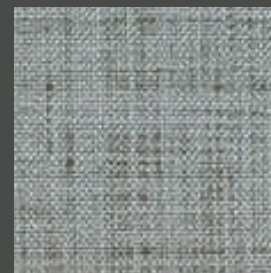
W1333-8



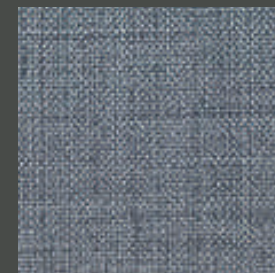
W1333-9



W1333-10



W1333-11



W1333-12



W1333-13



SELECT



SYDNY



WALL INDEX™
42" / 44" VINYL WALLCOVERINGS

SELECT/SYDNY

WALL INDEX™ VINYL WALL COVERINGS

SELECT/SYDNY

Product Specifications

Type II, Medium Weight, Class A, Vinyl Coated
Fabric Backed Wallcovering

Width	: 42"/44" (107 cm/112 cm)
Total Weight	: 15.0.oz./lin.yard - 375 gr/lin-meter
Backing	: Woven Cotton Backing
Fire Rated	: Class - "A" Tested In Accordance ASTM E-84 Tunnel Test
Tensile Breaking Strength	: 80X75 Pounds
Flame Spread	: 20
Smoke Developed	: 25
Pattern Match	: Random Match
Packaging	: 50 Meter Bolts



US Classification : ASTM-E84 Class - A

CHN Classification : GB8624-2012: Class B

EU Classification : EN 15102 : 2007+A1 : 2011



Anti Microbial Features:

Water based environmentally friendly inks, free of Cadmium, Mercury and Ozone depleting chemicals.

Wall Surface Preparations:

The wall surface must be clean, smooth, stable, even and all in one colour before hanging wallpaper. The wall should be dry enough with a maximum of 8% water absorption. If the other side of the wall is in a bathroom, the surface of the wall must be water proof. If the wall is wet of mouldy, the mould needs to be eliminated completely by brushing fungicide on it which will also make it moisture proof.

Adhesive Applying:

Apply adhesive evenly to the back of the wallpaper, fold and leave it for 5-10 minutes, and let the cloth absorb the adhesive completely. For heavy wallpaper, you can also brush adhesive directly to the wall and wait 5-10 minutes before hanging.

Hanging :

Start to hang from a corner and use a plumb line to ensure the wallpaper is straight and not leaning to one side, if the corner you started from is not straight, use a wiper board to smooth the wallpaper evenly and gently to remove any bubbles. For heavier wallpaper, use a strong glue for the seams. When applying the second strip, it should be applied to edge of the previous one and make sure the design is matched. For plain wallpapers there is no need to match. Overlap the two strips and use a sharp knife to cut in the middle. To make the cutting line straight, use a steel ruler.



Designed in USA

WALL INDEX™ VINYL WALL COVERINGS

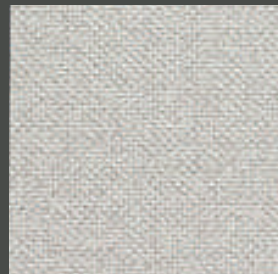
SELECT



W4211-1



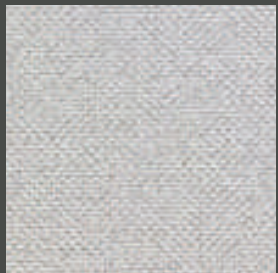
W4211-2



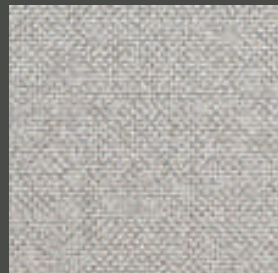
W4211-3



W4211-4



W4211-5



W4211-6



W4211-7

SYDNY

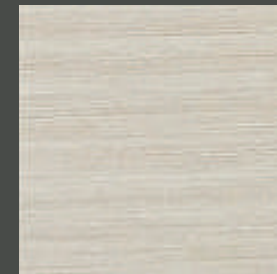
ENVIRONMENTAL WALL COVERING



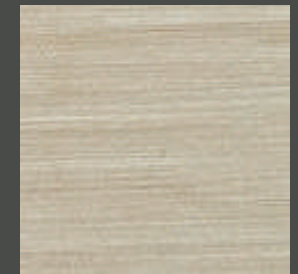
W4711-1



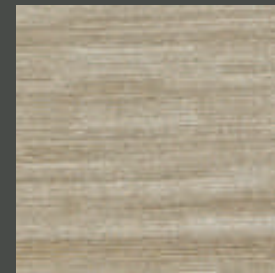
W4711-2



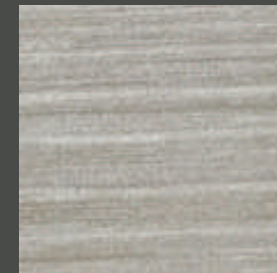
W4711-3



W4711-4



W4711-5



W4711-6



WALL INDEX™
52"/54" VINYL WALLCOVERINGS

DETER

WALL INDEX™ VINYL WALL COVERINGS

DETER

Product Specifications

- Type II, Medium Weight, Class A, Vinyl Coated
- Fabric Backed Wallcovering
- Width : 52"/54" (132 cm/137cm)
- Total Weight : 15.0.oz./lin.yard - 466 gr/lin-meter
- Backing : Woven Cotton Backing
- Fire Rated : Class - "A" Tested In Accordance
ASTM E-84 Tunnel Test
- Tensile Breaking Strength : 80X75 Pounds
- Flame Spread : 20
- Smoke Developed : 25
- Pattern Match : Random Match
- Packaging : 50 Meter Bolts



US Classification : ASTM-E84 Class - A

CHN Classification : GB8624-2012: Class B

EU Classification : EN 15102 : 2007+A1 : 2011



Anti Microbial Features:

Water based environmentally friendly inks, free of Cadmium, Mercury and Ozone depleting chemicals.

Wall Surface Preparations:

The wall surface must be clean, smooth, stable, even and all in one colour before hanging wallpaper. The wall should be dry enough with a maximum of 8% water absorption. If the other side of the wall is in a bathroom, the surface of the wall must be water proof. If the wall is wet of mouldy, the mould needs to be eliminated completely by brushing fungicide on it which will also make it moisture proof.

Adhesive Applying:

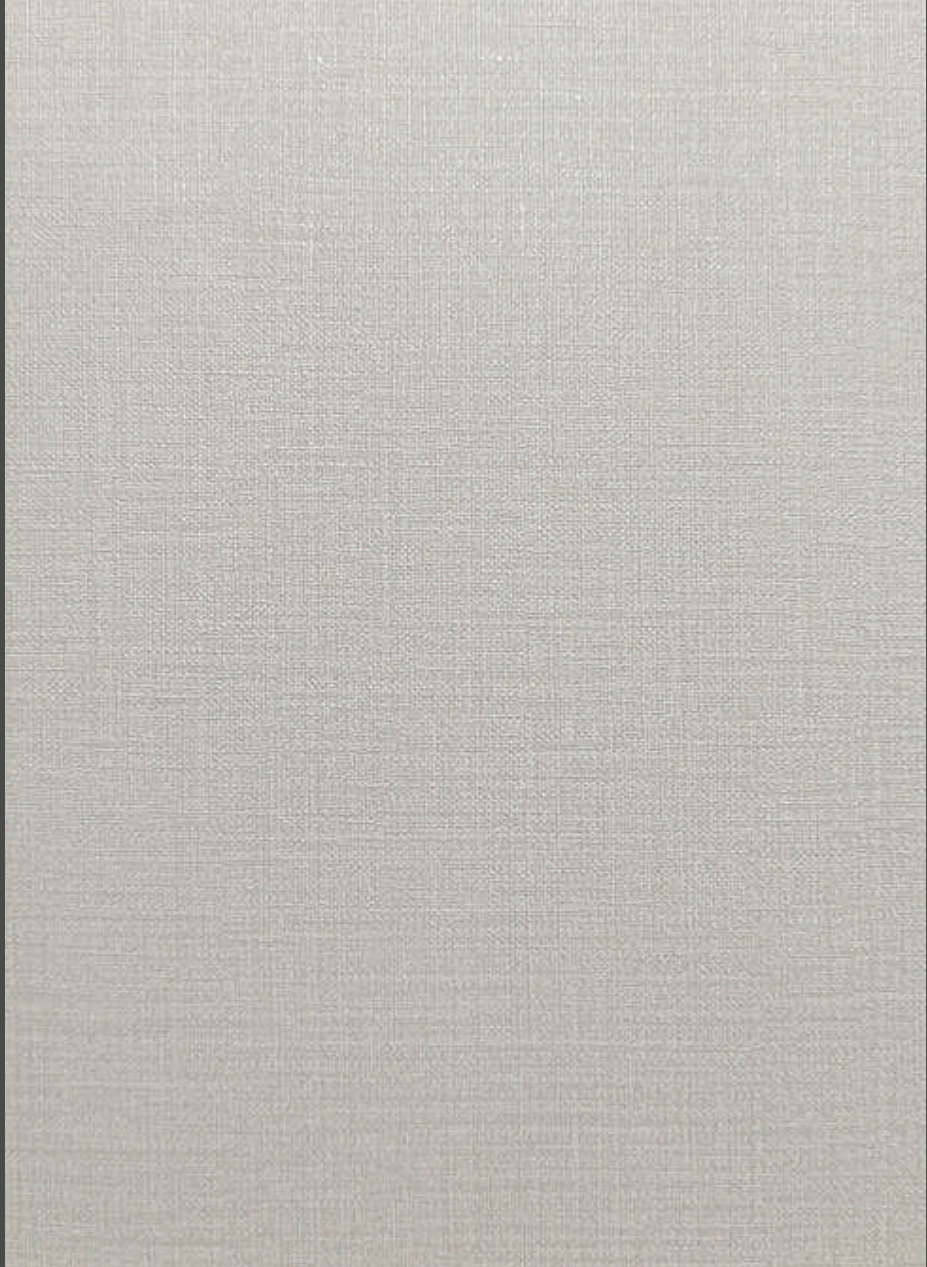
Apply adhesive evenly to the back of the wallpaper, fold and leave it for 5-10 minutes, and let the cloth absorb the adhesive completely. For heavy wallpaper, you can also brush adhesive directly to the wall and wait 5-10 minutes before hanging.

Hanging :

Start to hang from a corner and use a plumb line to ensure the wallpaper is straight and not leaning to one side, if the corner you started from is not straight, use a wiper board to smooth the wallpaper evenly and gently to remove any bubbles. For heavier wallpaper, use a strong glue for the seams. When applying the second strip, it should be applied to edge of the previous one and make sure the design is matched. For plain wallpapers there is no need to match. Overlap the two strips and use a sharp knife to cut in the middle. To make the cutting line straight, use a steel ruler.



Designed in USA



W5412-1

DETER



W5412-2



W5412-3



W5412-4



W5412-5



W5412-6



W5412-7



W5412-8



W5412-9



W5412-10



W5412-11



W5412-12



W5412-13



SILKY



MINQ



WALL INDEX™
42"/44" VINYL WALLCOVERINGS

SILKY/MINQ

WALL INDEX™ VINYL WALL COVERINGS

SILKY/MINQ

Product Specifications

Type II, Medium Weight, Class A, Vinyl Coated	
Fabric Backed Wallcovering	
Width	: 42"/44" (107 cm/112 cm)
Total Weight	: 15.0.oz./lin.yard - 375 gr/lin-meter
Backing	: Woven Cotton Backing
Fire Rated	: Class - "A" Tested In Accordance ASTM E-84 Tunnel Test
Tensile Breaking Strength	: 80X75 Pounds
Flame Spread	: 20
Smoke Developed	: 25
Pattern Match	: Random Match
Packaging	: 50 Meter Bolts



US Classification : ASTM-E84 Class - A

CHN Classification : GB8624-2012: Class B

EU Classification : EN 15102 : 2007+A1 : 2011



Anti Microbial Features:

Water based environmentally friendly inks, free of Cadmium, Mercury and Ozone depleting chemicals.

Wall Surface Preparations:

The wall surface must be clean, smooth, stable, even and all in one colour before hanging wallpaper. The wall should be dry enough with a maximum of 8% water absorption. If the other side of the wall is in a bathroom, the surface of the wall must be water proof. If the wall is wet of mouldy, the mould needs to be eliminated completely by brushing fungicide on it which will also make it moisture proof.

Adhesive Applying:

Apply adhesive evenly to the back of the wallpaper, fold and leave it for 5-10 minutes, and let the cloth absorb the adhesive completely. For heavy wallpaper, you can also brush adhesive directly to the wall and wait 5-10 minutes before hanging.

Hanging :

Start to hang from a corner and use a plumb line to ensure the wallpaper is straight and not leaning to one side, if the corner you started from is not straight, use a wiper board to smooth the wallpaper evenly and gently to remove any bubbles. For heavier wallpaper, use a strong glue for the seams. When applying the second strip, it should be applied to edge of the previous one and make sure the design is matched. For plain wallpapers there is no need to match. Overlap the two strips and use a sharp knife to cut in the middle. To make the cutting line straight, use a steel ruler.



Designed in USA

WALL INDEX™ VINYL WALL COVERINGS

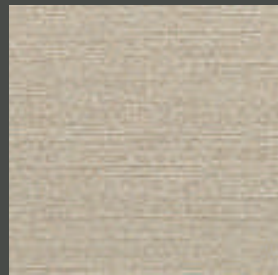
SILKY



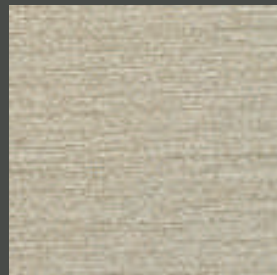
W4221-1



W4221-2



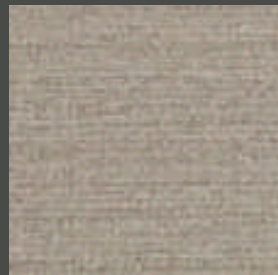
W4221-3



W4221-4



W4221-5



W4221-6



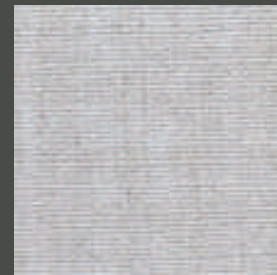
W4221-7

MINQ

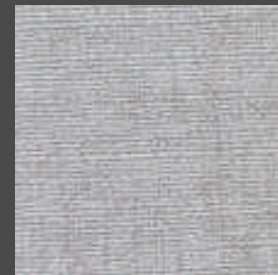
ENVIRONMENTAL WALL COVERING



W4313-1



W4313-2



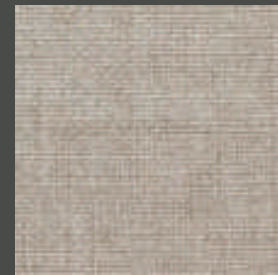
W4313-3



W4313-4



W4313-5



W4313-6



W4313-7



WALL INDEX™
52" / 54" VINYL WALLCOVERINGS

ZILAS

WALL INDEX™ VINYL WALL COVERINGS

Product Specifications

Type II, Medium Weight, Class A, Vinyl Coated
Fabric Backed Wallcovering

Width	: 52"/54" (132 cm/137cm)
Total Weight	: 15.0.oz./lin.yard - 466 gr/lin-meter
Backing	: Woven Cotton Backing
Fire Rated	: Class - "A" Tested In Accordance ASTM E-84 Tunnel Test
Tensile Breaking Strength	: 80X75 Pounds
Flame Spread	: 20
Smoke Developed	: 25
Pattern Match	: Random Match
Packaging	: 50 Meter Bolts



US Classification : ASTM-E84 Class - A

CHN Classification : GB8624-2012: Class B

EU Classification : EN 15102 : 2007+A1 : 2011



Anti Microbial Features:

Water based environmentally friendly inks, free of Cadmium, Mercury and Ozone depleting chemicals.

Wall Surface Preparations:

The wall surface must be clean, smooth, stable, even and all in one colour before hanging wallpaper. The wall should be dry enough with a maximum of 8% water absorption. If the other side of the wall is in a bathroom, the surface of the wall must be water proof. If the wall is wet of mouldy, the mould needs to be eliminated completely by brushing fungicide on it which will also make it moisture proof.

Adhesive Applying:

Apply adhesive evenly to the back of the wallpaper, fold and leave it for 5-10 minutes, and let the cloth absorb the adhesive completely. For heavy wallpaper, you can also brush adhesive directly to the wall and wait 5-10 minutes before hanging.

Hanging :

Start to hang from a corner and use a plumb line to ensure the wallpaper is straight and not leaning to one side, if the corner you started from is not straight, use a wiper board to smooth the wallpaper evenly and gently to remove any bubbles. For heavier wallpaper, use a strong glue for the seams. When applying the second strip, it should be applied to edge of the previous one and make sure the design is matched. For plain wallpapers there is no need to match. Overlap the two strips and use a sharp knife to cut in the middle. To make the cutting line straight, use a steel ruler.





W5611-1

ZILAS



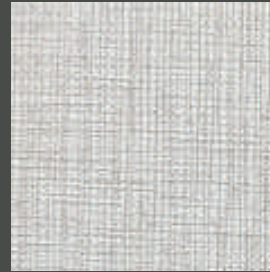
W5611-2



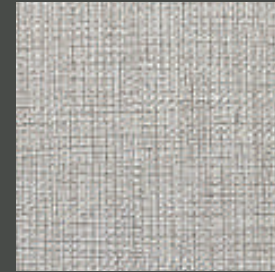
W5611-3



W5611-4



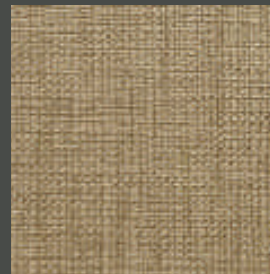
W5611-5



W5611-6



W5611-7



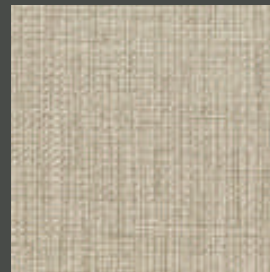
W5611-8



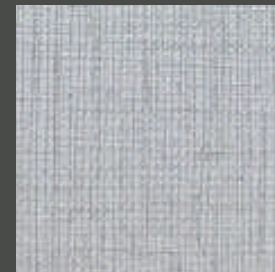
W5611-9



W5611-10



W5611-11



W5611-12



W5611-13



LINGUS



ORIENTA



WALL INDEX™
52"/54" VINYL WALLCOVERINGS

LINGUS/ORIENTA

WALL INDEX™ VINYL WALL COVERINGS

LINGUS/ORIENTA

Product Specifications

Type II, Medium Weight, Class A, Vinyl Coated	
Fabric Backed Wallcovering	
Width	: 52"/54" (132 cm/137cm) (LINGUS)
	: 36"/38" (91cm/96cm) (ORIENTA)
Total Weight	: 15.0.oz./lin.yard
Backing	: Woven Cotton Backing
Fire Rated	: Class - "A" Tested In Accordance ASTM E-84 Tunnel Test
Tensile Breaking Strength	: 80X75 Pounds
Flame Spread	: 20
Smoke Developed	: 25
Pattern Match	: Random Match
Packaging	: 50 Meter Bolts



US Classification : ASTM-E84 Class - A

CHN Classification : GB8624-2012: Class B

EU Classification : EN 15102 : 2007+A1 : 2011



Anti Microbial Features:

Water based environmentally friendly inks, free of Cadmium, Mercury and Ozone depleting chemicals.

Wall Surface Preparations:

The wall surface must be clean, smooth, stable, even and all in one colour before hanging wallpaper. The wall should be dry enough with a maximum of 8% water absorption. If the other side of the wall is in a bathroom, the surface of the wall must be water proof. If the wall is wet of mouldy, the mould needs to be eliminated completely by brushing fungicide on it which will also make it moisture proof.

Adhesive Applying:

Apply adhesive evenly to the back of the wallpaper, fold and leave it for 5-10 minutes, and let the cloth absorb the adhesive completely. For heavy wallpaper, you can also brush adhesive directly to the wall and wait 5-10 minutes before hanging.

Hanging :

Start to hang from a corner and use a plumb line to ensure the wallpaper is straight and not leaning to one side, if the corner you started from is not straight, use a wiper board to smooth the wallpaper evenly and gently to remove any bubbles. For heavier wallpaper, use a strong glue for the seams. When applying the second strip, it should be applied to edge of the previous one and make sure the design is matched. For plain wallpapers there is no need to match. Overlap the two strips and use a sharp knife to cut in the middle. To make the cutting line straight, use a steel ruler.



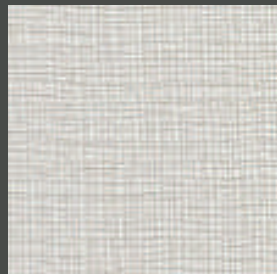
Designed in USA

WALL INDEX™ VINYL WALL COVERINGS

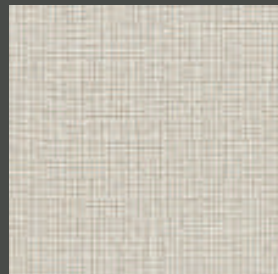
LINGUS



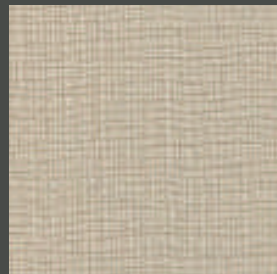
W2055-1



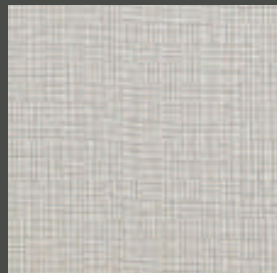
W2055-2



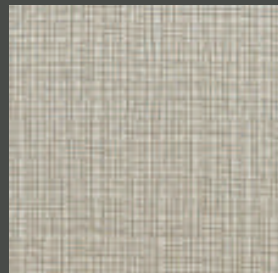
W2055-3



W2055-4



W2055-5



W2055-6



W2055-7

ORIENTA

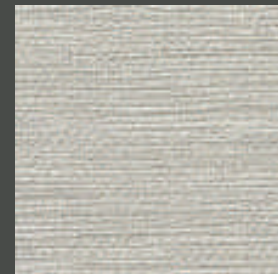
ENVIRONMENTAL WALL COVERING



W4323-1



W4323-2



W4323-3



W4323-4



W4323-5



W4323-6



W4323-7



ZEBEK



WALL INDEX™
52"/54" VINYL WALLCOVERINGS

ZEBEK

WALL INDEX™ VINYL WALL COVERINGS

ZEBEK

Product Specifications

Type II, Medium Weight, Class A, Vinyl Coated	
Fabric Backed Wallcovering	
Width	: 52"/54" (132 cm/137cm)
Total Weight	: 15.0.oz./lin.yard - 466 gr/lin-meter
Backing	: Woven Cotton Backing
Fire Rated	: Class - "A" Tested In Accordance ASTM E-84 Tunnel Test
Tensile Breaking Strength	: 80X75 Pounds
Flame Spread	: 20
Smoke Developed	: 25
Pattern Match	: Random Match
Packaging	: 50 Meter Bolts



US Classification : ASTM-E84 Class - A

CHN Classification : GB8624-2012: Class B

EU Classification : EN 15102 : 2007+A1 : 2011



Anti Microbial Features:

Water based environmentally friendly inks, free of Cadmium, Mercury and Ozone depleting chemicals.

Wall Surface Preparations:

The wall surface must be clean, smooth, stable, even and all in one colour before hanging wallpaper. The wall should be dry enough with a maximum of 8% water absorption. If the other side of the wall is in a bathroom, the surface of the wall must be water proof. If the wall is wet of mouldy, the mould needs to be eliminated completely by brushing fungicide on it which will also make it moisture proof.

Adhesive Applying:

Apply adhesive evenly to the back of the wallpaper, fold and leave it for 5-10 minutes, and let the cloth absorb the adhesive completely. For heavy wallpaper, you can also brush adhesive directly to the wall and wait 5-10 minutes before hanging.

Hanging :

Start to hang from a corner and use a plumb line to ensure the wallpaper is straight and not leaning to one side, if the corner you started from is not straight, use a wiper board to smooth the wallpaper evenly and gently to remove any bubbles. For heavier wallpaper, use a strong glue for the seams. When applying the second strip, it should be applied to edge of the previous one and make sure the design is matched. For plain wallpapers there is no need to match. Overlap the two strips and use a sharp knife to cut in the middle. To make the cutting line straight, use a steel ruler.



Designed in USA



W5511-1

ZEBEK



W5511-2



W5511-3



W5511-4



W5511-5



W5511-6



W5511-7



W5511-8



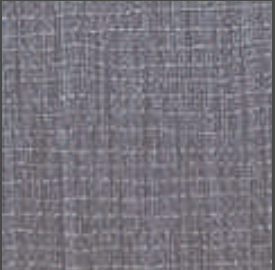
W5511-9



W5511-10



W5511-11



W5511-12



OXFER



EIZER



WALL INDEX™
52"/54" VINYL WALLCOVERINGS

OXFER/EIZER

WALL INDEX™ VINYL WALL COVERINGS

OXFER/EIZER

Product Specifications

Type II, Medium Weight, Class A, Vinyl Coated
Fabric Backed Wallcovering

Width	: 52"/54" (132 cm/137cm)
Total Weight	: 15.0.oz./lin.yard - 466 gr/lin-meter
Backing	: Woven Cotton Backing
Fire Rated	: Class - "A" Tested In Accordance ASTM E-84 Tunnel Test
Tensile Breaking Strength	: 80X75 Pounds
Flame Spread	: 20
Smoke Developed	: 25
Pattern Match	: Random Match
Packaging	: 50 Meter Bolts



US Classification : ASTM-E84 Class - A

CHN Classification : GB8624-2012: Class B

EU Classification : EN 15102 : 2007+A1 : 2011



Anti Microbial Features:

Water based environmentally friendly inks, free of Cadmium, Mercury and Ozone depleting chemicals.

Wall Surface Preparations:

The wall surface must be clean, smooth, stable, even and all in one colour before hanging wallpaper. The wall should be dry enough with a maximum of 8% water absorption. If the other side of the wall is in a bathroom, the surface of the wall must be water proof. If the wall is wet of mouldy, the mould needs to be eliminated completely by brushing fungicide on it which will also make it moisture proof.

Adhesive Applying:

Apply adhesive evenly to the back of the wallpaper, fold and leave it for 5-10 minutes, and let the cloth absorb the adhesive completely. For heavy wallpaper, you can also brush adhesive directly to the wall and wait 5-10 minutes before hanging.

Hanging :

Start to hang from a corner and use a plumb line to ensure the wallpaper is straight and not leaning to one side, if the corner you started from is not straight, use a wiper board to smooth the wallpaper evenly and gently to remove any bubbles. For heavier wallpaper, use a strong glue for the seams. When applying the second strip, it should be applied to edge of the previous one and make sure the design is matched. For plain wallpapers there is no need to match. Overlap the two strips and use a sharp knife to cut in the middle. To make the cutting line straight, use a steel ruler.



Designed in USA

WALL INDEX™ VINYL WALL COVERINGS

OXFER



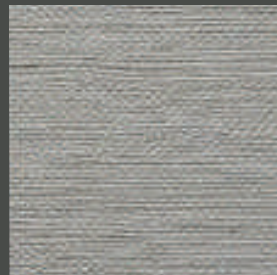
W5999-1



W5999-2



W5999-3



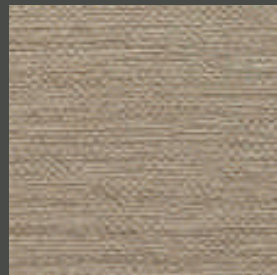
W5999-4



W5999-5



W5999-6



W5999-7

EIZER

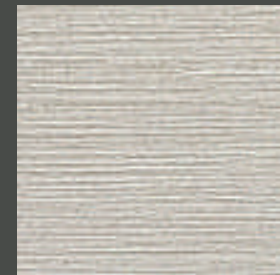
ENVIRONMENTAL WALL COVERING



W5499-1



W5499-2



W5499-3



W5499-4



W5499-5



W5499-6



W5499-7



WALL INDEX™
52"/54" VINYL WALLCOVERINGS

ELAS

WALL INDEX™ VINYL WALL COVERINGS

ELAS

Product Specifications

Type II, Medium Weight, Class A, Vinyl Coated
Fabric Backed Wallcovering

Width	: 52"/54" (132 cm/137cm)
Total Weight	: 15.0.oz./lin.yard - 466 gr/lin-meter
Backing	: Woven Cotton Backing
Fire Rated	: Class - "A" Tested In Accordance ASTM E-84 Tunnel Test
Tensile Breaking Strength	: 80X75 Pounds
Flame Spread	: 20
Smoke Developed	: 25
Pattern Match	: Random Match
Packaging	: 50 Meter Bolts



US Classification : ASTM-E84 Class - A

CHN Classification : GB8624-2012: Class B

EU Classification : EN 15102 : 2007+A1 : 2011



Anti Microbial Features:

Water based environmentally friendly inks, free of Cadmium, Mercury and Ozone depleting chemicals.

Wall Surface Preparations:

The wall surface must be clean, smooth, stable, even and all in one colour before hanging wallpaper. The wall should be dry enough with a maximum of 8% water absorption. If the other side of the wall is in a bathroom, the surface of the wall must be water proof. If the wall is wet of mouldy, the mould needs to be eliminated completely by brushing fungicide on it which will also make it moisture proof.

Adhesive Applying:

Apply adhesive evenly to the back of the wallpaper, fold and leave it for 5-10 minutes, and let the cloth absorb the adhesive completely. For heavy wallpaper, you can also brush adhesive directly to the wall and wait 5-10 minutes before hanging.

Hanging :

Start to hang from a corner and use a plumb line to ensure the wallpaper is straight and not leaning to one side, if the corner you started from is not straight, use a wiper board to smooth the wallpaper evenly and gently to remove any bubbles. For heavier wallpaper, use a strong glue for the seams. When applying the second strip, it should be applied to edge of the previous one and make sure the design is matched. For plain wallpapers there is no need to match. Overlap the two strips and use a sharp knife to cut in the middle. To make the cutting line straight, use a steel ruler.

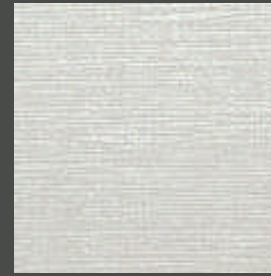


Designed in USA



W1263-1

ELAS



W1263-2



W1263-3



W1263-4



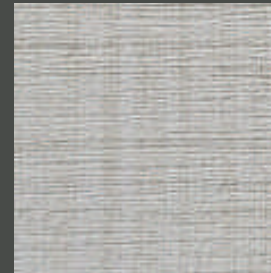
W1263-5



W1263-6



W1263-7



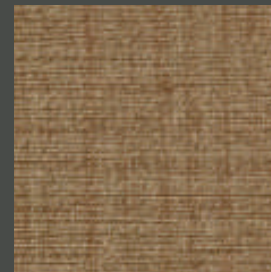
W1263-8



W1263-9



W1263-10



W1263-11



W1263-12



W1263-13



DEXOR



LISON



WALL INDEX™
52"/54" VINYL WALLCOVERINGS

DEXOR/LISON

WALL INDEX™ VINYL WALL COVERINGS

DEXOR/LISON

Product Specifications

Type II, Medium Weight, Class A, Vinyl Coated
Fabric Backed Wallcovering

Width	: 52"/54" (132 cm/137cm)
Total Weight	: 15.0.oz./lin.yard - 466 gr/lin-meter
Backing	: Woven Cotton Backing
Fire Rated	: Class - "A" Tested In Accordance ASTM E-84 Tunnel Test
Tensile Breaking Strength	: 80X75 Pounds
Flame Spread	: 20
Smoke Developed	: 25
Pattern Match	: Random Match
Packaging	: 50 Meter Bolts



US Classification : ASTM-E84 Class - A

CHN Classification : GB8624-2012: Class B

EU Classification : EN 15102 : 2007+A1 : 2011



Anti Microbial Features:

Water based environmentally friendly inks, free of Cadmium, Mercury and Ozone depleting chemicals.

Wall Surface Preparations:

The wall surface must be clean, smooth, stable, even and all in one colour before hanging wallpaper. The wall should be dry enough with a maximum of 8% water absorption. If the other side of the wall is in a bathroom, the surface of the wall must be water proof. If the wall is wet of mouldy, the mould needs to be eliminated completely by brushing fungicide on it which will also make it moisture proof.

Adhesive Applying:

Apply adhesive evenly to the back of the wallpaper, fold and leave it for 5-10 minutes, and let the cloth absorb the adhesive completely. For heavy wallpaper, you can also brush adhesive directly to the wall and wait 5-10 minutes before hanging.

Hanging :

Start to hang from a corner and use a plumb line to ensure the wallpaper is straight and not leaning to one side, if the corner you started from is not straight, use a wiper board to smooth the wallpaper evenly and gently to remove any bubbles. For heavier wallpaper, use a strong glue for the seams. When applying the second strip, it should be applied to edge of the previous one and make sure the design is matched. For plain wallpapers there is no need to match. Overlap the two strips and use a sharp knife to cut in the middle. To make the cutting line straight, use a steel ruler.



Designed in USA

WALL INDEX™ VINYL WALL COVERINGS

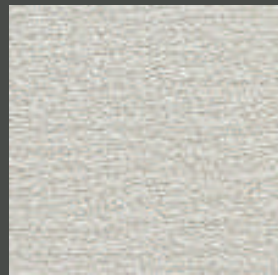
DEXOR



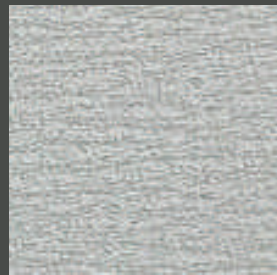
W3191-1



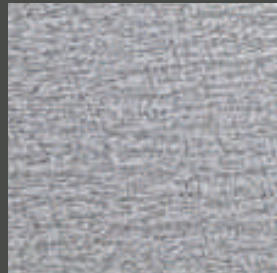
W3191-2



W3191-3



W3191-4



W3191-5



W3191-6



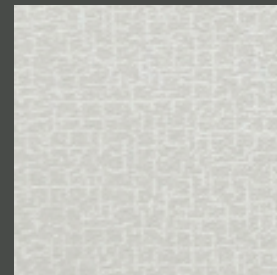
W3191-7

LISON

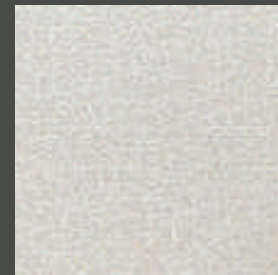
ENVIRONMENTAL WALL COVERING



W2053-1



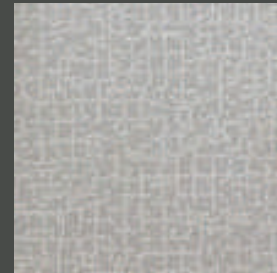
W2053-2



W2053-3



W2053-4



W2053-5



W2053-6



W2053-7



WALL INDEX™
52"/54" VINYL WALLCOVERINGS

ICONIC

WALL INDEX™ VINYL WALL COVERINGS

ICONIC

Product Specifications

- Type II, Medium Weight, Class A, Vinyl Coated
- Fabric Backed Wallcovering
- Width : 52"/54" (132 cm/137cm)
- Total Weight : 15.0.oz./lin.yard - 466 gr/lin-meter
- Backing : Woven Cotton Backing
- Fire Rated : Class - "A" Tested In Accordance
ASTM E-84 Tunnel Test
- Tensile Breaking Strength : 80X75 Pounds
- Flame Spread : 20
- Smoke Developed : 25
- Pattern Match : Random Match
- Packaging : 50 Meter Bolts



US Classification : ASTM-E84 Class - A

CHN Classification : GB8624-2012: Class B

EU Classification : EN 15102 : 2007+A1 : 2011



Anti Microbial Features:

Water based environmentally friendly inks, free of Cadmium, Mercury and Ozone depleting chemicals.

Wall Surface Preparations:

The wall surface must be clean, smooth, stable, even and all in one colour before hanging wallpaper. The wall should be dry enough with a maximum of 8% water absorption. If the other side of the wall is in a bathroom, the surface of the wall must be water proof. If the wall is wet of mouldy, the mould needs to be eliminated completely by brushing fungicide on it which will also make it moisture proof.

Adhesive Applying:

Apply adhesive evenly to the back of the wallpaper, fold and leave it for 5-10 minutes, and let the cloth absorb the adhesive completely. For heavy wallpaper, you can also brush adhesive directly to the wall and wait 5-10 minutes before hanging.

Hanging :

Start to hang from a corner and use a plumb line to ensure the wallpaper is straight and not leaning to one side, if the corner you started from is not straight, use a wiper board to smooth the wallpaper evenly and gently to remove any bubbles. For heavier wallpaper, use a strong glue for the seams. When applying the second strip, it should be applied to edge of the previous one and make sure the design is matched. For plain wallpapers there is no need to match. Overlap the two strips and use a sharp knife to cut in the middle. To make the cutting line straight, use a steel ruler.



Designed in USA



W3616-1

ICONIC



W3616-2



W3616-3



W3616-4



W3616-5



W3616-6



W3616-7



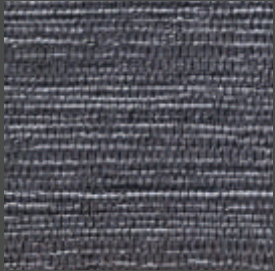
W3616-8



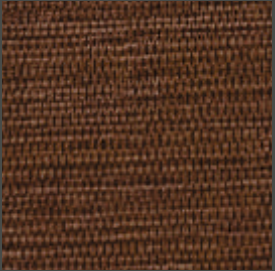
W3616-9



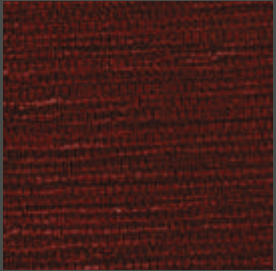
W3616-10



W3616-11



W3616-12



W3616-13



AZOTIC



FOLICA



WALL INDEX™

34"/36" VINYL WALLCOVERINGS

AZOTIC/FOLICA

WALL INDEX™ VINYL WALL COVERINGS

AZOTIC/FOLICA

Product Specifications

- Type II, Medium Weight, Class A, Vinyl Coated
- Fabric Backed Wallcovering
- Width : 34"/36" (86cm/91cm)
- Total Weight : 15.0.oz./lin.yard -315 gr/lin-meter
- Backing : Woven Cotton Backing
- Fire Rated : Class - "A" Tested In Accordance
ASTM E-84 Tunnel Test
- Tensile Breaking Strength : 80X75 Pounds
- Flame Spread : 20
- Smoke Developed : 25
- Pattern Match : Random Match
- Packaging : 50 Meter Bolts



US Classification : ASTM-E84 Class - A

CHN Classification : GB8624-2012: Class B

EU Classification : EN 15102 : 2007+A1 : 2011



Anti Microbial Features:

Water based environmentally friendly inks, free of Cadmium, Mercury and Ozone depleting chemicals.

Wall Surface Preparations:

The wall surface must be clean, smooth, stable, even and all in one colour before hanging wallpaper. The wall should be dry enough with a maximum of 8% water absorption. If the other side of the wall is in a bathroom, the surface of the wall must be water proof. If the wall is wet of mouldy, the mould needs to be eliminated completely by brushing fungicide on it which will also make it moisture proof.

Adhesive Applying:

Apply adhesive evenly to the back of the wallpaper, fold and leave it for 5-10 minutes, and let the cloth absorb the adhesive completely. For heavy wallpaper, you can also brush adhesive directly to the wall and wait 5-10 minutes before hanging.

Hanging :

Start to hang from a corner and use a plumb line to ensure the wallpaper is straight and not leaning to one side, if the corner you started from is not straight, use a wiper board to smooth the wallpaper evenly and gently to remove any bubbles. For heavier wallpaper, use a strong glue for the seams. When applying the second strip, it should be applied to edge of the previous one and make sure the design is matched. For plain wallpapers there is no need to match. Overlap the two strips and use a sharp knife to cut in the middle. To make the cutting line straight, use a steel ruler.



Designed in USA

WALL INDEX™ VINYL WALL COVERINGS

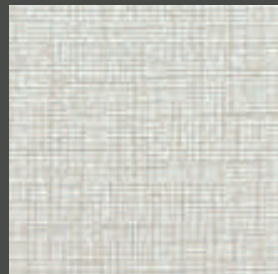
AZOTIC



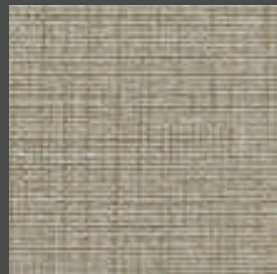
W5710-1



W5710-2



W5710-3



W5710-4



W5710-5



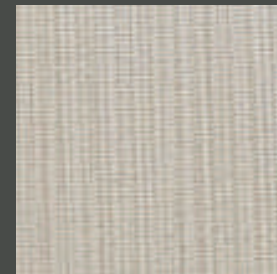
W5710-6

FOLICA

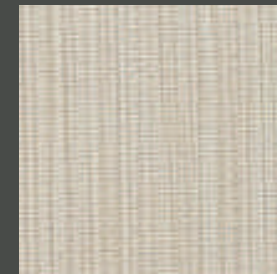
ENVIRONMENTAL WALL COVERING



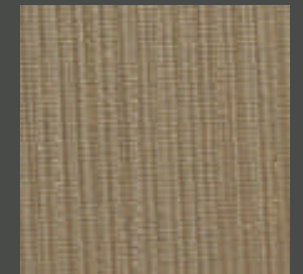
W5773-1



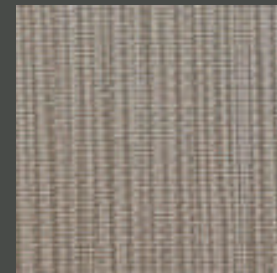
W5773-2



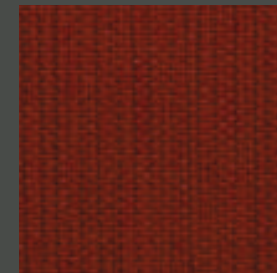
W5773-3



W5773-4



W5773-5



W5773-6



WARSA



WALL INDEX™
52"/54" VINYL WALLCOVERINGS

WARSA

WALL INDEX™ VINYL WALL COVERINGS

WARSA

Product Specifications

Type II, Medium Weight, Class A, Vinyl Coated
Fabric Backed Wallcovering

Width	: 52"/54" (132 cm/137cm)
Total Weight	: 15.0.oz./lin.yard - 466 gr/lin-meter
Backing	: Woven Cotton Backing
Fire Rated	: Class - "A" Tested In Accordance ASTM E-84 Tunnel Test
Tensile Breaking Strength	: 80X75 Pounds
Flame Spread	: 20
Smoke Developed	: 25
Pattern Match	: Random Match
Packaging	: 50 Meter Bolts



US Classification : ASTM-E84 Class - A

CHN Classification : GB8624-2012: Class B

EU Classification : EN 15102 : 2007+A1 : 2011



Anti Microbial Features:

Water based environmentally friendly inks, free of Cadmium, Mercury and Ozone depleting chemicals.

Wall Surface Preparations:

The wall surface must be clean, smooth, stable, even and all in one colour before hanging wallpaper. The wall should be dry enough with a maximum of 8% water absorption. If the other side of the wall is in a bathroom, the surface of the wall must be water proof. If the wall is wet of mouldy, the mould needs to be eliminated completely by brushing fungicide on it which will also make it moisture proof.

Adhesive Applying:

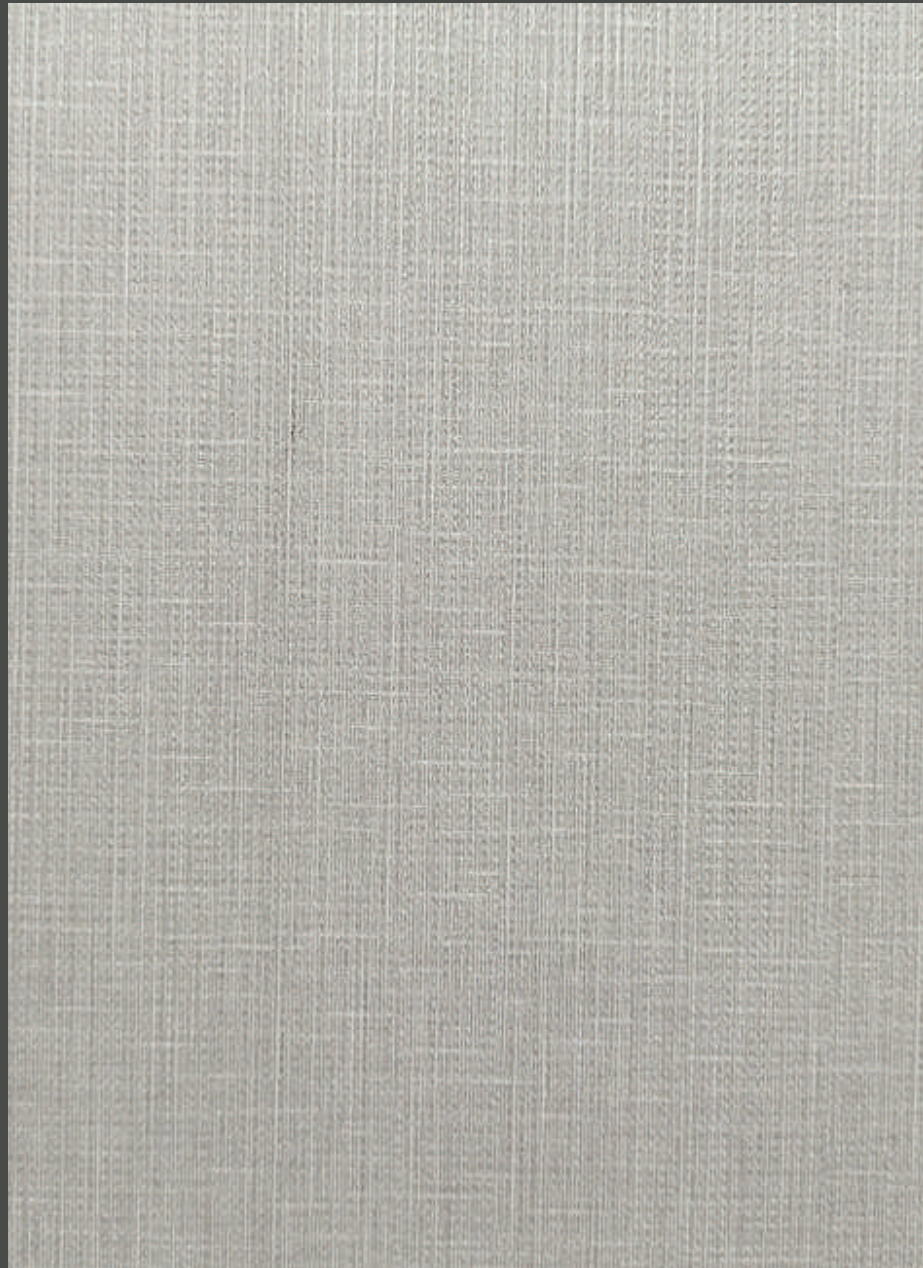
Apply adhesive evenly to the back of the wallpaper, fold and leave it for 5-10 minutes, and let the cloth absorb the adhesive completely. For heavy wallpaper, you can also brush adhesive directly to the wall and wait 5-10 minutes before hanging.

Hanging :

Start to hang from a corner and use a plumb line to ensure the wallpaper is straight and not leaning to one side, if the corner you started from is not straight, use a wiper board to smooth the wallpaper evenly and gently to remove any bubbles. For heavier wallpaper, use a strong glue for the seams. When applying the second strip, it should be applied to edge of the previous one and make sure the design is matched. For plain wallpapers there is no need to match. Overlap the two strips and use a sharp knife to cut in the middle. To make the cutting line straight, use a steel ruler.

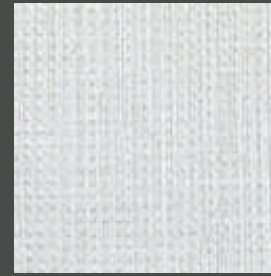


Designed in USA



W5121-1

WARSA



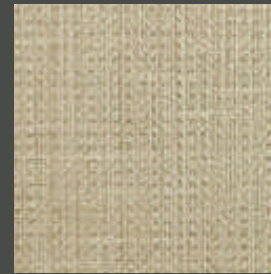
W5121-2



W5121-3



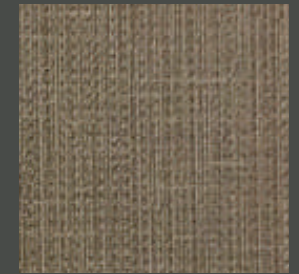
W5121-4



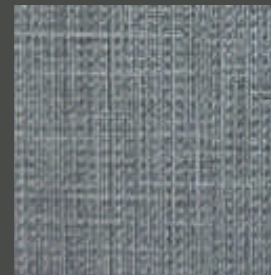
W5121-5



W5121-6



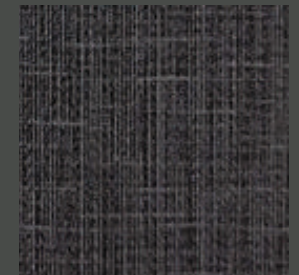
W5121-7



W5121-8



W5121-9



W5121-10



ELICH



WALL INDEX™

52"/54" VINYL WALLCOVERINGS

CHELCY



ELICH/CHELCY

WALL INDEX™ VINYL WALL COVERINGS

ELICH/CHELCY

Product Specifications

Type II, Medium Weight, Class A, Vinyl Coated	
Fabric Backed Wallcovering	
Width	: 52"/54" (132 cm/137cm)
Total Weight	: 15.0.oz./lin.yard - 466 gr/lin-meter
Backing	: Woven Cotton Backing
Fire Rated	: Class - "A" Tested In Accordance ASTM E-84 Tunnel Test
Tensile Breaking Strength	: 80X75 Pounds
Flame Spread	: 20
Smoke Developed	: 25
Pattern Match	: Random Match
Packaging	: 50 Meter Bolts



US Classification : ASTM-E84 Class - A

CHN Classification : GB8624-2012: Class B

EU Classification : EN 15102 : 2007+A1 : 2011



Anti Microbial Features:

Water based environmentally friendly inks, free of Cadmium, Mercury and Ozone depleting chemicals.

Wall Surface Preparations:

The wall surface must be clean, smooth, stable, even and all in one colour before hanging wallpaper. The wall should be dry enough with a maximum of 8% water absorption. If the other side of the wall is in a bathroom, the surface of the wall must be water proof. If the wall is wet of mouldy, the mould needs to be eliminated completely by brushing fungicide on it which will also make it moisture proof.

Adhesive Applying:

Apply adhesive evenly to the back of the wallpaper, fold and leave it for 5-10 minutes, and let the cloth absorb the adhesive completely. For heavy wallpaper, you can also brush adhesive directly to the wall and wait 5-10 minutes before hanging.

Hanging :

Start to hang from a corner and use a plumb line to ensure the wallpaper is straight and not leaning to one side, if the corner you started from is not straight, use a wiper board to smooth the wallpaper evenly and gently to remove any bubbles. For heavier wallpaper, use a strong glue for the seams. When applying the second strip, it should be applied to edge of the previous one and make sure the design is matched. For plain wallpapers there is no need to match. Overlap the two strips and use a sharp knife to cut in the middle. To make the cutting line straight, use a steel ruler.



Designed in USA

WALL INDEX™ VINYL WALL COVERINGS

ELICH



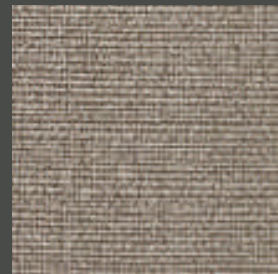
W2012-1



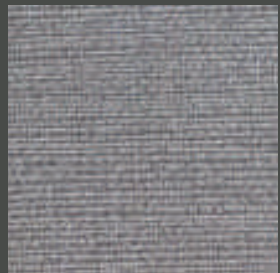
W2012-2



W2012-3



W2012-4



W2012-5



W2012-6



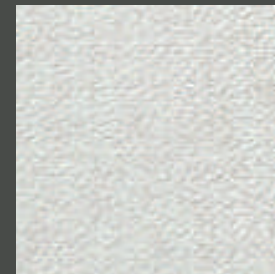
W2012-7

CHELCY

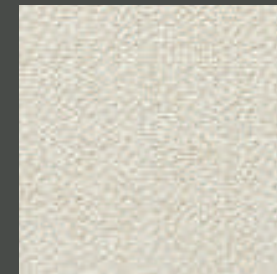
ENVIRONMENTAL WALL COVERING



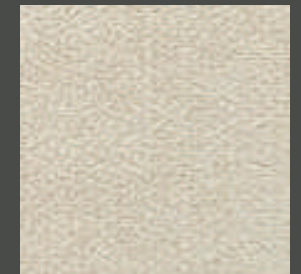
W2032-1



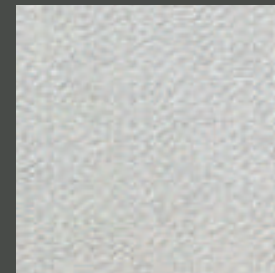
W2032-2



W2032-3



W2032-4



W2032-5



W2032-6



W2032-7



WALL INDEX™ 52"/54" VINYL WALLCOVERINGS

HORISUN

WALL INDEX™ VINYL WALL COVERINGS

HORISUN

Product Specifications

Type II, Medium Weight, Class A, Vinyl Coated
Fabric Backed Wallcovering

Width	: 52"/54" (132 cm/137cm)
Total Weight	: 15.0.oz./lin.yard - 466 gr/lin-meter
Backing	: Woven Cotton Backing
Fire Rated	: Class - "A" Tested In Accordance ASTM E-84 Tunnel Test
Tensile Breaking Strength	: 80X75 Pounds
Flame Spread	: 20
Smoke Developed	: 25
Pattern Match	: Random Match
Packaging	: 50 Meter Bolts



US Classification : ASTM-E84 Class - A

CHN Classification : GB8624-2012: Class B

EU Classification : EN 15102 : 2007+A1 : 2011



Anti Microbial Features:

Water based environmentally friendly inks, free of Cadmium, Mercury and Ozone depleting chemicals.

Wall Surface Preparations:

The wall surface must be clean, smooth, stable, even and all in one colour before hanging wallpaper. The wall should be dry enough with a maximum of 8% water absorption. If the other side of the wall is in a bathroom, the surface of the wall must be water proof. If the wall is wet of mouldy, the mould needs to be eliminated completely by brushing fungicide on it which will also make it moisture proof.

Adhesive Applying:

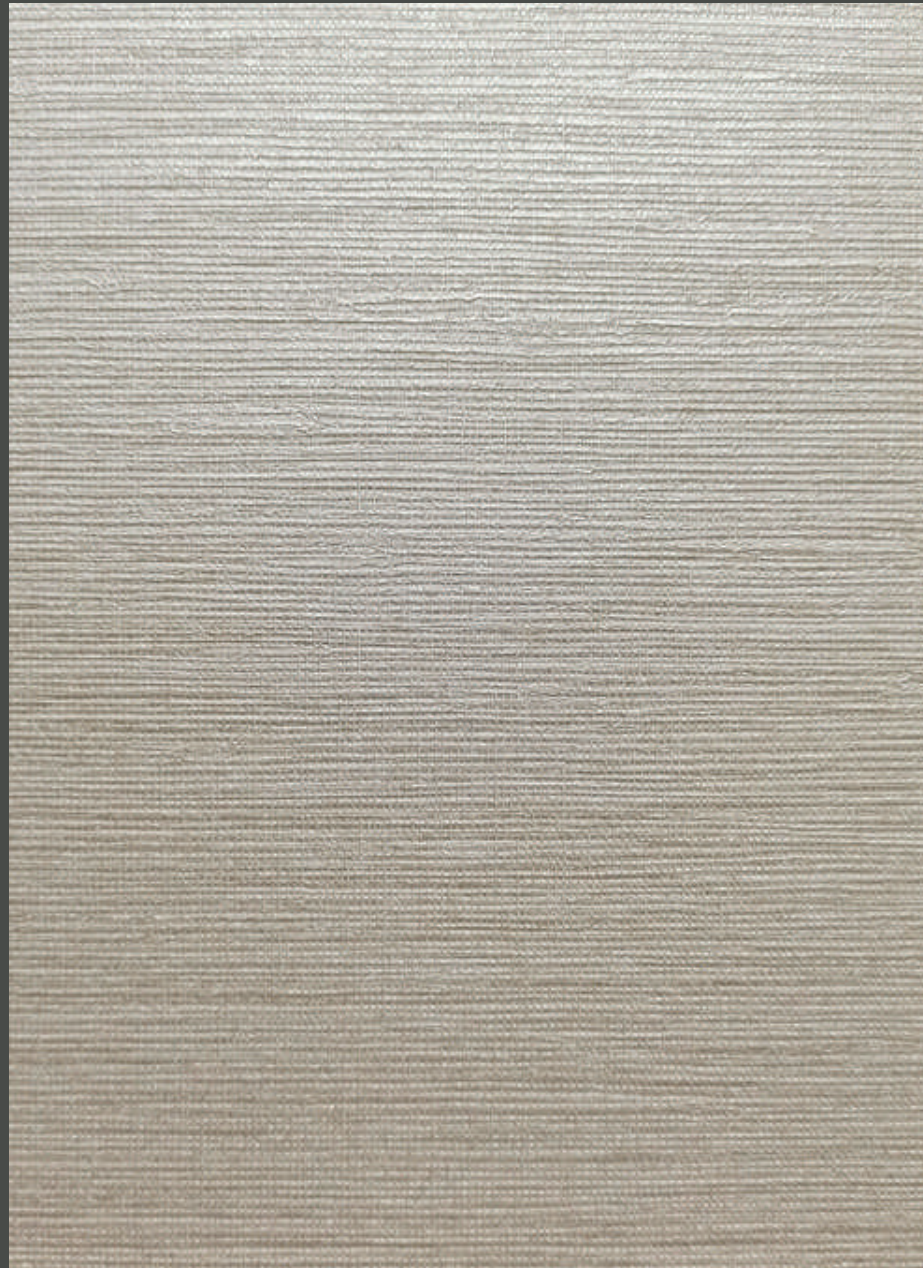
Apply adhesive evenly to the back of the wallpaper, fold and leave it for 5-10 minutes, and let the cloth absorb the adhesive completely. For heavy wallpaper, you can also brush adhesive directly to the wall and wait 5-10 minutes before hanging.

Hanging :

Start to hang from a corner and use a plumb line to ensure the wallpaper is straight and not leaning to one side, if the corner you started from is not straight, use a wiper board to smooth the wallpaper evenly and gently to remove any bubbles. For heavier wallpaper, use a strong glue for the seams. When applying the second strip, it should be applied to edge of the previous one and make sure the design is matched. For plain wallpapers there is no need to match. Overlap the two strips and use a sharp knife to cut in the middle. To make the cutting line straight, use a steel ruler.

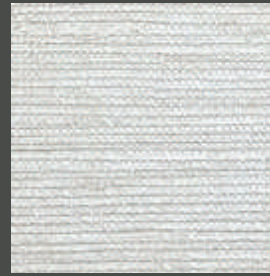


Designed in USA

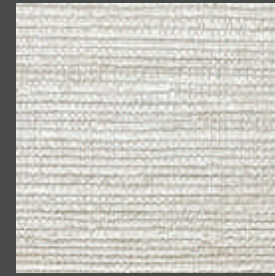


W1132-1

HORISUN



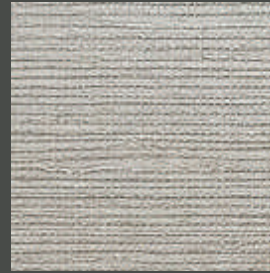
W1132-2



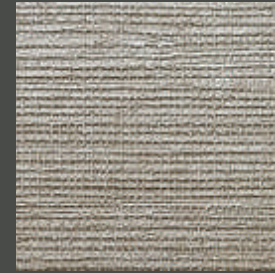
W1132-3



W1132-4



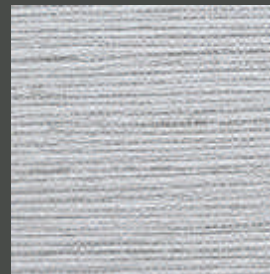
W1132-5



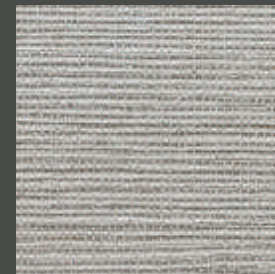
W1132-6



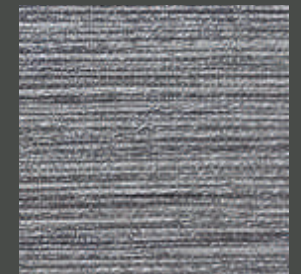
W1132-7



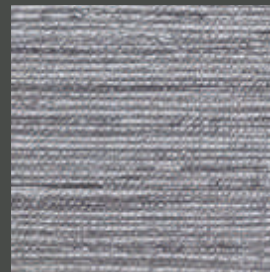
W1132-8



W1132-9



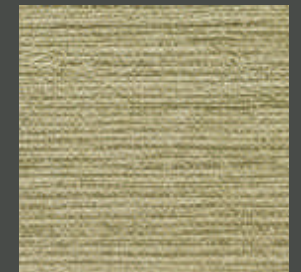
W1132-10



W1132-11



W1132-12



W1132-13



RELINER



WALL INDEX™

52"/54" VINYL WALLCOVERINGS

BARLIN



RELINER/BARLIN

WALL INDEX™ VINYL WALL COVERINGS

RELINER/BARLIN

Product Specifications

- Type II, Medium Weight, Class A, Vinyl Coated
- Fabric Backed Wallcovering
- Width : 52"/54" (132 cm/137cm)
- Total Weight : 15.0.oz./lin.yard - 466 gr/lin-meter
- Backing : Woven Cotton Backing
- Fire Rated : Class - "A" Tested In Accordance
ASTM E-84 Tunnel Test
- Tensile Breaking Strength : 80X75 Pounds
- Flame Spread : 20
- Smoke Developed : 25
- Pattern Match : Random Match
- Packaging : 50 Meter Bolts



US Classification : ASTM-E84 Class - A

CHN Classification : GB8624-2012: Class B

EU Classification : EN 15102 : 2007+A1 : 2011



Anti Microbial Features:

Water based environmentally friendly inks, free of Cadmium, Mercury and Ozone depleting chemicals.

Wall Surface Preparations:

The wall surface must be clean, smooth, stable, even and all in one colour before hanging wallpaper. The wall should be dry enough with a maximum of 8% water absorption. If the other side of the wall is in a bathroom, the surface of the wall must be water proof. If the wall is wet of mouldy, the mould needs to be eliminated completely by brushing fungicide on it which will also make it moisture proof.

Adhesive Applying:

Apply adhesive evenly to the back of the wallpaper, fold and leave it for 5-10 minutes, and let the cloth absorb the adhesive completely. For heavy wallpaper, you can also brush adhesive directly to the wall and wait 5-10 minutes before hanging.

Hanging :

Start to hang from a corner and use a plumb line to ensure the wallpaper is straight and not leaning to one side, if the corner you started from is not straight, use a wiper board to smooth the wallpaper evenly and gently to remove any bubbles. For heavier wallpaper, use a strong glue for the seams. When applying the second strip, it should be applied to edge of the previous one and make sure the design is matched. For plain wallpapers there is no need to match. Overlap the two strips and use a sharp knife to cut in the middle. To make the cutting line straight, use a steel ruler.



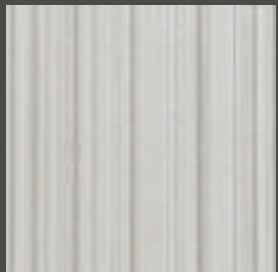
Designed in USA

WALL INDEX™ VINYL WALL COVERINGS

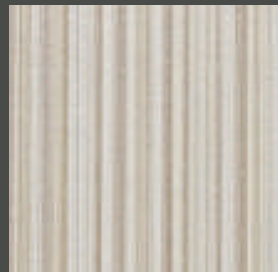
RELINER



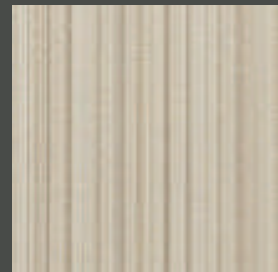
W1118-1



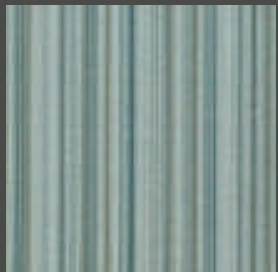
W1118-2



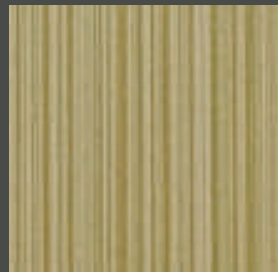
W1118-3



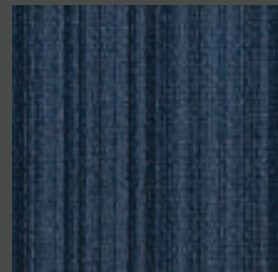
W1118-4



W1118-5



W1118-6



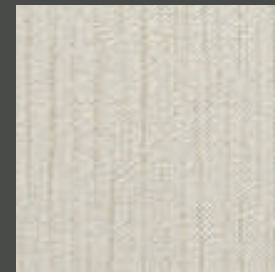
W1118-7

BARLIN

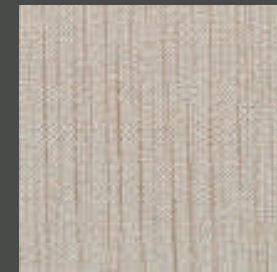
ENVIRONMENTAL WALL COVERING



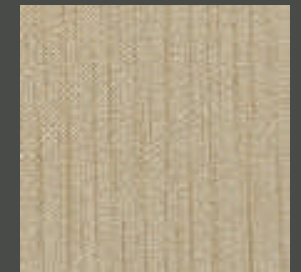
W2071-1



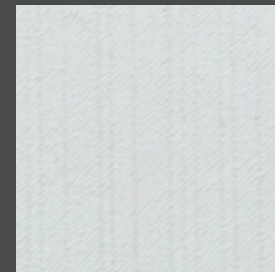
W2071-2



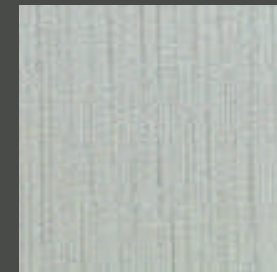
W2071-3



W2071-4



W2071-5



W2071-6



W2071-7



WALL INDEX™
52"/54" VINYL WALLCOVERINGS

COLSUN

WALL INDEX™ VINYL WALL COVERINGS

COLSUN

Product Specifications

- Type II, Medium Weight, Class A, Vinyl Coated
- Fabric Backed Wallcovering
- Width : 52"/54" (132 cm/137cm)
- Total Weight : 15.0.oz./lin.yard - 466 gr/lin-meter
- Backing : Woven Cotton Backing
- Fire Rated : Class - "A" Tested In Accordance
ASTM E-84 Tunnel Test
- Tensile Breaking Strength : 80X75 Pounds
- Flame Spread : 20
- Smoke Developed : 25
- Pattern Match : Random Match
- Packaging : 50 Meter Bolts



US Classification : ASTM-E84 Class - A

CHN Classification : GB8624-2012: Class B

EU Classification : EN 15102 : 2007+A1 : 2011



Anti Microbial Features:

Water based environmentally friendly inks, free of Cadmium, Mercury and Ozone depleting chemicals.

Wall Surface Preparations:

The wall surface must be clean, smooth, stable, even and all in one colour before hanging wallpaper. The wall should be dry enough with a maximum of 8% water absorption. If the other side of the wall is in a bathroom, the surface of the wall must be water proof. If the wall is wet of mouldy, the mould needs to be eliminated completely by brushing fungicide on it which will also make it moisture proof.

Adhesive Applying:

Apply adhesive evenly to the back of the wallpaper, fold and leave it for 5-10 minutes, and let the cloth absorb the adhesive completely. For heavy wallpaper, you can also brush adhesive directly to the wall and wait 5-10 minutes before hanging.

Hanging :

Start to hang from a corner and use a plumb line to ensure the wallpaper is straight and not leaning to one side, if the corner you started from is not straight, use a wiper board to smooth the wallpaper evenly and gently to remove any bubbles. For heavier wallpaper, use a strong glue for the seams. When applying the second strip, it should be applied to edge of the previous one and make sure the design is matched. For plain wallpapers there is no need to match. Overlap the two strips and use a sharp knife to cut in the middle. To make the cutting line straight, use a steel ruler.



Designed in USA



W1252-1

COLSUN

ENVIRONMENTAL WALL COVERING



W1252-2



W1252-3



W1252-4



W1252-5



W1252-6



W1252-7



W1252-8



W1252-9



W1252-10



W1252-11



W1252-12



W1252-13



ALISON



LINCY



WALL INDEX™
52"/54" VINYL WALLCOVERINGS

ALISON/LINCY

WALL INDEX™ VINYL WALL COVERINGS

ALISON/LINCY

Product Specifications

Type II, Medium Weight, Class A, Vinyl Coated	
Fabric Backed Wallcovering	
Width	: 52"/54" (132 cm/137cm)
Total Weight	: 15.0.oz./lin.yard - 466 gr/lin-meter
Backing	: Woven Cotton Backing
Fire Rated	: Class - "A" Tested In Accordance ASTM E-84 Tunnel Test
Tensile Breaking Strength	: 80X75 Pounds
Flame Spread	: 20
Smoke Developed	: 25
Pattern Match	: Random Match
Packaging	: 50 Meter Bolts



US Classification : ASTM-E84 Class - A

CHN Classification : GB8624-2012: Class B

EU Classification : EN 15102 : 2007+A1 : 2011



Anti Microbial Features:

Water based environmentally friendly inks, free of Cadmium, Mercury and Ozone depleting chemicals.

Wall Surface Preparations:

The wall surface must be clean, smooth, stable, even and all in one colour before hanging wallpaper. The wall should be dry enough with a maximum of 8% water absorption. If the other side of the wall is in a bathroom, the surface of the wall must be water proof. If the wall is wet of mouldy, the mould needs to be eliminated completely by brushing fungicide on it which will also make it moisture proof.

Adhesive Applying:

Apply adhesive evenly to the back of the wallpaper, fold and leave it for 5-10 minutes, and let the cloth absorb the adhesive completely. For heavy wallpaper, you can also brush adhesive directly to the wall and wait 5-10 minutes before hanging.

Hanging :

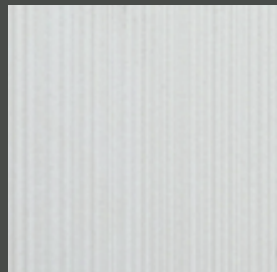
Start to hang from a corner and use a plumb line to ensure the wallpaper is straight and not leaning to one side, if the corner you started from is not straight, use a wiper board to smooth the wallpaper evenly and gently to remove any bubbles. For heavier wallpaper, use a strong glue for the seams. When applying the second strip, it should be applied to edge of the previous one and make sure the design is matched. For plain wallpapers there is no need to match. Overlap the two strips and use a sharp knife to cut in the middle. To make the cutting line straight, use a steel ruler.



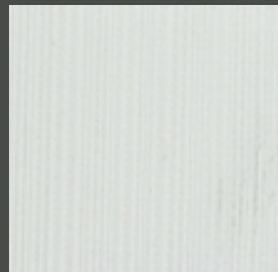
Designed in USA



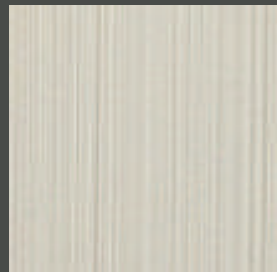
W5666-1



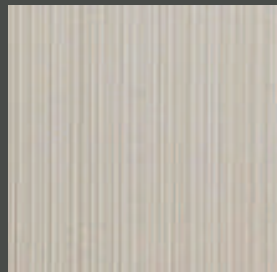
W5666-2



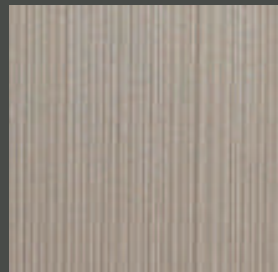
W5666-3



W5666-4



W5666-5



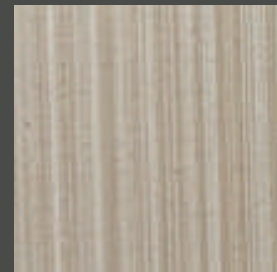
W5666-6



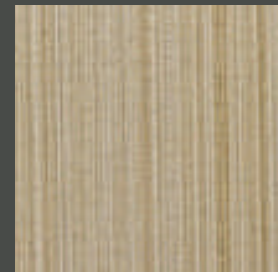
W5666-7



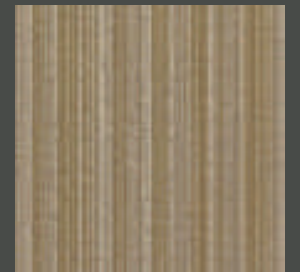
W3711-1



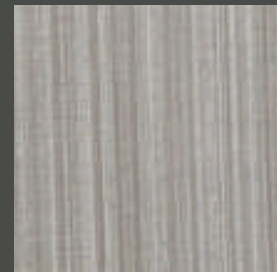
W3711-2



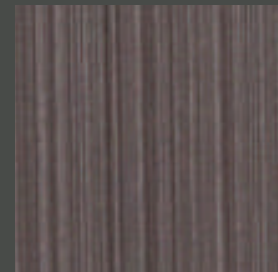
W3711-3



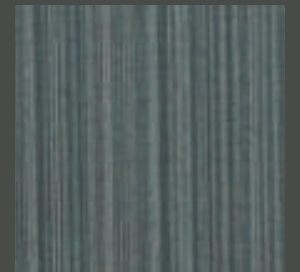
W3711-4



W3711-5



W3711-6



W3711-7



WALL INDEX™
52"/54" VINYL WALLCOVERINGS

QBECK

WALL INDEX™ VINYL WALL COVERINGS

QBECK

Product Specifications

- Type II, Medium Weight, Class A, Vinyl Coated
- Fabric Backed Wallcovering
- Width : 52"/54" (132 cm/137cm)
- Total Weight : 15.0.oz./lin.yard - 466 gr/lin-meter
- Backing : Woven Cotton Backing
- Fire Rated : Class - "A" Tested In Accordance
ASTM E-84 Tunnel Test
- Tensile Breaking Strength : 80X75 Pounds
- Flame Spread : 20
- Smoke Developed : 25
- Pattern Match : Random Match
- Packaging : 50 Meter Bolts



US Classification : ASTM-E84 Class - A

CHN Classification : GB8624-2012: Class B

EU Classification : EN 15102 : 2007+A1 : 2011



Anti Microbial Features:

Water based environmentally friendly inks, free of Cadmium, Mercury and Ozone depleting chemicals.

Wall Surface Preparations:

The wall surface must be clean, smooth, stable, even and all in one colour before hanging wallpaper. The wall should be dry enough with a maximum of 8% water absorption. If the other side of the wall is in a bathroom, the surface of the wall must be water proof. If the wall is wet of mouldy, the mould needs to be eliminated completely by brushing fungicide on it which will also make it moisture proof.

Adhesive Applying:

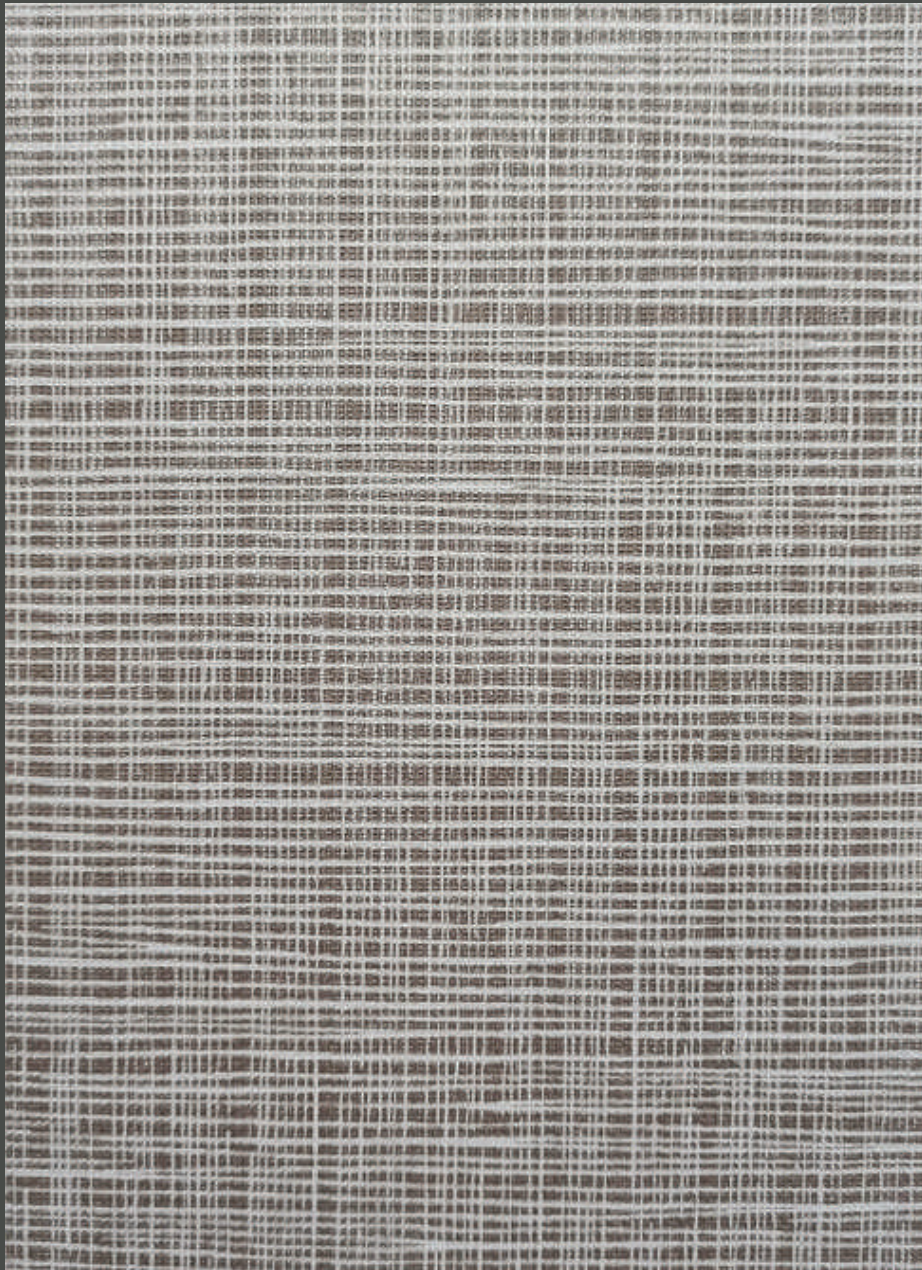
Apply adhesive evenly to the back of the wallpaper, fold and leave it for 5-10 minutes, and let the cloth absorb the adhesive completely. For heavy wallpaper, you can also brush adhesive directly to the wall and wait 5-10 minutes before hanging.

Hanging :

Start to hang from a corner and use a plumb line to ensure the wallpaper is straight and not leaning to one side, if the corner you started from is not straight, use a wiper board to smooth the wallpaper evenly and gently to remove any bubbles. For heavier wallpaper, use a strong glue for the seams. When applying the second strip, it should be applied to edge of the previous one and make sure the design is matched. For plain wallpapers there is no need to match. Overlap the two strips and use a sharp knife to cut in the middle. To make the cutting line straight, use a steel ruler.

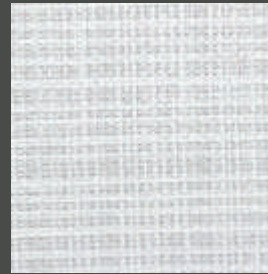


Designed in USA

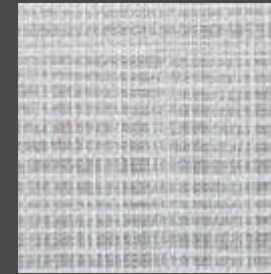


W3101-1

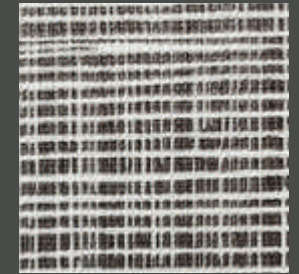
QBECK



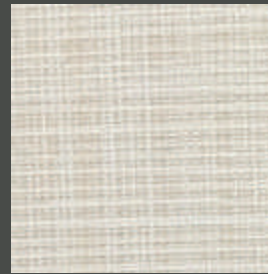
W3101-2



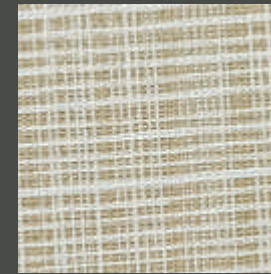
W3101-3



W3101-4



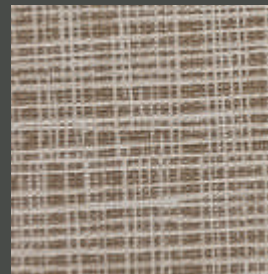
W3101-5



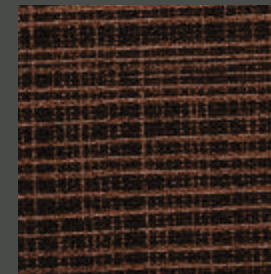
W3101-6



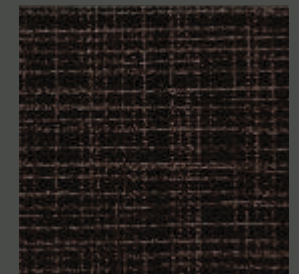
W3101-7



W3101-8



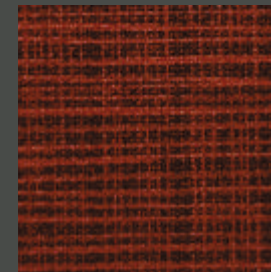
W3101-9



W3101-10



W3101-11



W3101-12



BRISUN



VALIS



WALL INDEX™
52"/54" VINYL WALLCOVERINGS

BRISUN/VALIS

WALL INDEX™ VINYL WALL COVERINGS

BRISUN/VALIS

Product Specifications

Type II, Medium Weight, Class A, Vinyl Coated
Fabric Backed Wallcovering

Width	: 52"/54" (132 cm/137cm)
Total Weight	: 15.0.oz./lin.yard - 466 gr/lin-meter
Backing	: Woven Cotton Backing
Fire Rated	: Class - "A" Tested In Accordance ASTM E-84 Tunnel Test
Tensile Breaking Strength	: 80X75 Pounds
Flame Spread	: 20
Smoke Developed	: 25
Pattern Match	: Random Match
Packaging	: 50 Meter Bolts



US Classification : ASTM-E84 Class - A

CHN Classification : GB8624-2012: Class B

EU Classification : EN 15102 : 2007+A1 : 2011



Anti Microbial Features:

Water based environmentally friendly inks, free of Cadmium, Mercury and Ozone depleting chemicals.

Wall Surface Preparations:

The wall surface must be clean, smooth, stable, even and all in one colour before hanging wallpaper. The wall should be dry enough with a maximum of 8% water absorption. If the other side of the wall is in a bathroom, the surface of the wall must be water proof. If the wall is wet of mouldy, the mould needs to be eliminated completely by brushing fungicide on it which will also make it moisture proof.

Adhesive Applying:

Apply adhesive evenly to the back of the wallpaper, fold and leave it for 5-10 minutes, and let the cloth absorb the adhesive completely. For heavy wallpaper, you can also brush adhesive directly to the wall and wait 5-10 minutes before hanging.

Hanging :

Start to hang from a corner and use a plumb line to ensure the wallpaper is straight and not leaning to one side, if the corner you started from is not straight, use a wiper board to smooth the wallpaper evenly and gently to remove any bubbles. For heavier wallpaper, use a strong glue for the seams. When applying the second strip, it should be applied to edge of the previous one and make sure the design is matched. For plain wallpapers there is no need to match. Overlap the two strips and use a sharp knife to cut in the middle. To make the cutting line straight, use a steel ruler.



Designed in USA

WALL INDEX™ VINYL WALL COVERINGS

BRISUN



W1187-1



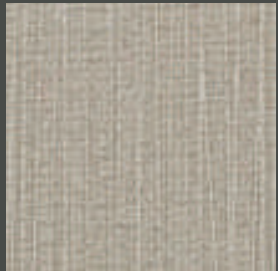
W1187-2



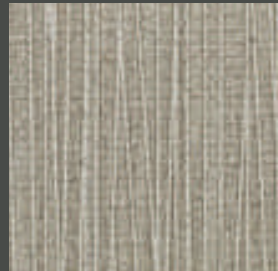
W1187-3



W1187-4



W1187-5



W1187-6



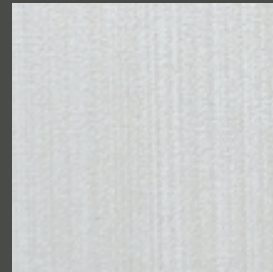
W1187-7

VALIS

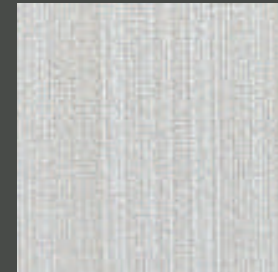
ENVIRONMENTAL WALL COVERING



W5881-1



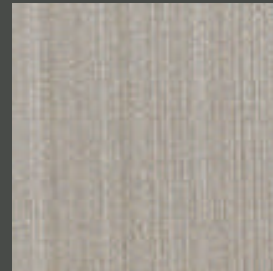
W5881-2



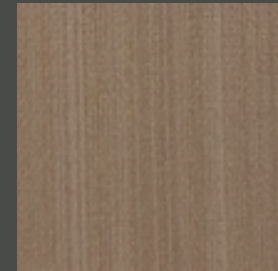
W5881-3



W5881-4



W5881-5



W5881-6



WEBER



WALL INDEX™
52"/54" VINYL WALLCOVERINGS

WEBER

WALL INDEX™ VINYL WALL COVERINGS

WEBER

Product Specifications

Type II, Medium Weight, Class A, Vinyl Coated
Fabric Backed Wallcovering

Width	: 52"/54" (132 cm/137cm)
Total Weight	: 20.0.oz./lin.yard - 615 gr/lin-meter
Backing	: Woven Cotton Backing
Fire Rated	: Class - "A" Tested In Accordance ASTM E-84 Tunnel Test
Tensile Breaking Strength	: 80X75 Pounds
Flame Spread	: 20
Smoke Developed	: 25
Pattern Match	: Random Match
Packaging	: 50 Meter Bolts



US Classification : ASTM-E84 Class - A

CHN Classification : GB8624-2012: Class B

EU Classification : EN 15102 : 2007+A1 : 2011



Anti Microbial Features:

Water based environmentally friendly inks, free of Cadmium, Mercury and Ozone depleting chemicals.

Wall Surface Preparations:

The wall surface must be clean, smooth, stable, even and all in one colour before hanging wallpaper. The wall should be dry enough with a maximum of 8% water absorption. If the other side of the wall is in a bathroom, the surface of the wall must be water proof. If the wall is wet of mouldy, the mould needs to be eliminated completely by brushing fungicide on it which will also make it moisture proof.

Adhesive Applying:

Apply adhesive evenly to the back of the wallpaper, fold and leave it for 5-10 minutes, and let the cloth absorb the adhesive completely. For heavy wallpaper, you can also brush adhesive directly to the wall and wait 5-10 minutes before hanging.

Hanging :

Start to hang from a corner and use a plumb line to ensure the wallpaper is straight and not leaning to one side, if the corner you started from is not straight, use a wiper board to smooth the wallpaper evenly and gently to remove any bubbles. For heavier wallpaper, use a strong glue for the seams. When applying the second strip, it should be applied to edge of the previous one and make sure the design is matched. For plain wallpapers there is no need to match. Overlap the two strips and use a sharp knife to cut in the middle. To make the cutting line straight, use a steel ruler.



Designed in USA



W5311-1

WEBER



W5311-2



W5311-3



W5311-4



W5311-5



W5311-6



W5311-7



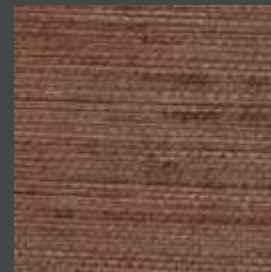
W5311-8



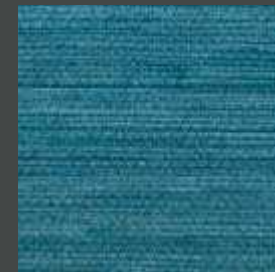
W5311-9



W5311-10



W5311-11



W5311-12



W5311-13



MONIS



DELIN



WALL INDEX™
52"/54" VINYL WALLCOVERINGS

MONIS/DELIN

WALL INDEX™ VINYL WALL COVERINGS

MONIS/DELIN

Product Specifications

Type II, Medium Weight, Class A, Vinyl Coated
Fabric Backed Wallcovering

Width	: 52"/54" (132 cm/137cm)
Total Weight	: 20.0.oz./lin.yard - 615 gr/lin-meter
Backing	: Woven Cotton Backing
Fire Rated	: Class - "A" Tested In Accordance ASTM E-84 Tunnel Test
Tensile Breaking Strength	: 80X75 Pounds
Flame Spread	: 20
Smoke Developed	: 25
Pattern Match	: Random Match
Packaging	: 50 Meter Bolts



US Classification : ASTM-E84 Class - A

CHN Classification : GB8624-2012: Class B

EU Classification : EN 15102 : 2007+A1 : 2011



Anti Microbial Features:

Water based environmentally friendly inks, free of Cadmium, Mercury and Ozone depleting chemicals.

Wall Surface Preparations:

The wall surface must be clean, smooth, stable, even and all in one colour before hanging wallpaper. The wall should be dry enough with a maximum of 8% water absorption. If the other side of the wall is in a bathroom, the surface of the wall must be water proof. If the wall is wet or mouldy, the mould needs to be eliminated completely by brushing fungicide on it which will also make it moisture proof.

Adhesive Applying:

Apply adhesive evenly to the back of the wallpaper, fold and leave it for 5-10 minutes, and let the cloth absorb the adhesive completely. For heavy wallpaper, you can also brush adhesive directly to the wall and wait 5-10 minutes before hanging.

Hanging :

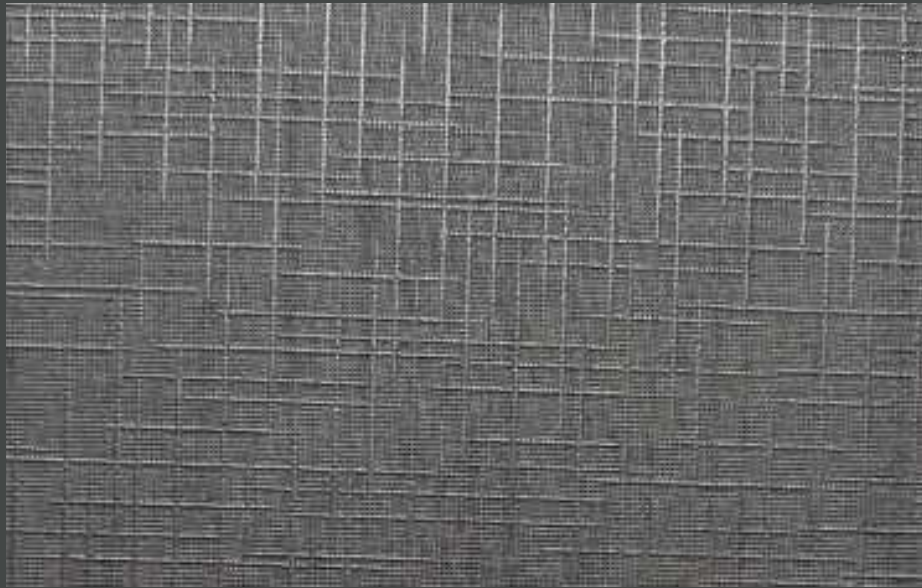
Start to hang from a corner and use a plumb line to ensure the wallpaper is straight and not leaning to one side, if the corner you started from is not straight, use a wiper board to smooth the wallpaper evenly and gently to remove any bubbles. For heavier wallpaper, use a strong glue for the seams. When applying the second strip, it should be applied to edge of the previous one and make sure the design is matched. For plain wallpapers there is no need to match. Overlap the two strips and use a sharp knife to cut in the middle. To make the cutting line straight, use a steel ruler.



Designed in USA

WALL INDEX™ VINYL WALL COVERINGS

MONIS



W2091-1



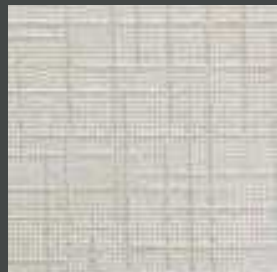
W2091-2



W2091-3



W2091-4



W2091-5



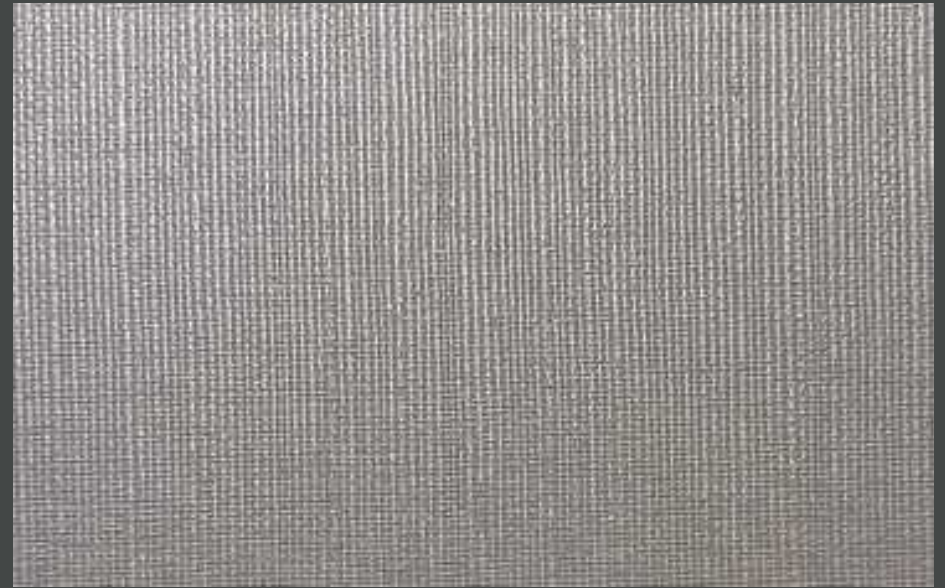
W2091-6



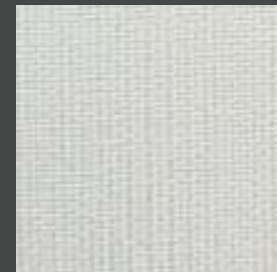
W2091-7

DELIN

ENVIRONMENTAL WALL COVERING



W3001-1



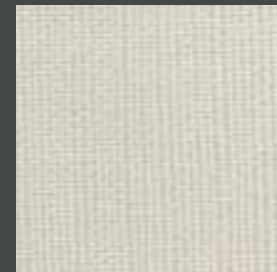
W3001-2



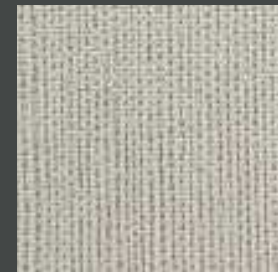
W3001-3



W3001-4



W3001-5



W3001-6



W3001-7



WIZARD



WALL INDEX™
52"/54" VINYL WALLCOVERINGS

WIZARD

WALL INDEX™ VINYL WALL COVERINGS

WIZARD

Product Specifications

Type II, Medium Weight, Class A, Vinyl Coated	
Fabric Backed Wallcovering	
Width	: 52"/54" (132 cm/137cm)
Total Weight	: 20.0.oz./lin.yard - 615 gr/lin-meter
Backing	: Woven Cotton Backing
Fire Rated	: Class - "A" Tested In Accordance ASTM E-84 Tunnel Test
Tensile Breaking Strength	: 80X75 Pounds
Flame Spread	: 20
Smoke Developed	: 25
Pattern Match	: Random Match
Packaging	: 50 Meter Bolts



US Classification : ASTM-E84 Class - A

CHN Classification : GB8624-2012: Class B

EU Classification : EN 15102 : 2007+A1 : 2011



Anti Microbial Features:

Water based environmentally friendly inks, free of Cadmium, Mercury and Ozone depleting chemicals.

Wall Surface Preparations:

The wall surface must be clean, smooth, stable, even and all in one colour before hanging wallpaper. The wall should be dry enough with a maximum of 8% water absorption. If the other side of the wall is in a bathroom, the surface of the wall must be water proof. If the wall is wet of mouldy, the mould needs to be eliminated completely by brushing fungicide on it which will also make it moisture proof.

Adhesive Applying:

Apply adhesive evenly to the back of the wallpaper, fold and leave it for 5-10 minutes, and let the cloth absorb the adhesive completely. For heavy wallpaper, you can also brush adhesive directly to the wall and wait 5-10 minutes before hanging.

Hanging :

Start to hang from a corner and use a plumb line to ensure the wallpaper is straight and not leaning to one side, if the corner you started from is not straight, use a wiper board to smooth the wallpaper evenly and gently to remove any bubbles. For heavier wallpaper, use a strong glue for the seams. When applying the second strip, it should be applied to edge of the previous one and make sure the design is matched. For plain wallpapers there is no need to match. Overlap the two strips and use a sharp knife to cut in the middle. To make the cutting line straight, use a steel ruler.

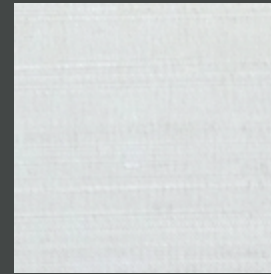


Designed in USA



W5232-1

WIZARD



W5232-2



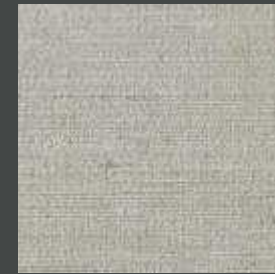
W5232-3



W5232-4



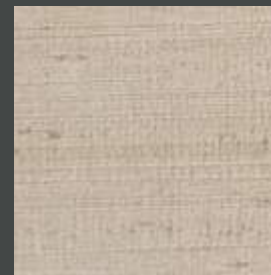
W5232-5



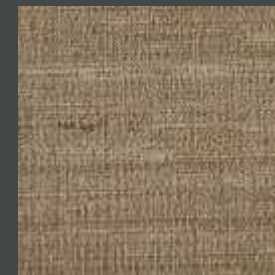
W5232-6



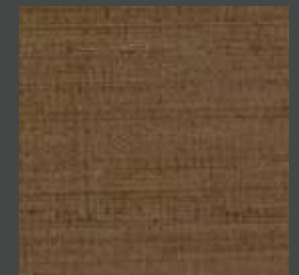
W5232-7



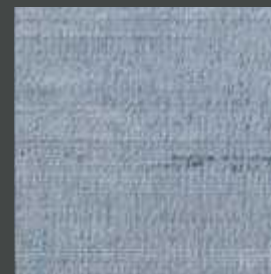
W5232-8



W5232-9



W5232-10



W5232-11



W5232-12



W5232-13



DELAS



CAMRY



WALL INDEX™
52"/54" VINYL WALLCOVERINGS

DELAS/CAMRY

WALL INDEX™ VINYL WALL COVERINGS

DELAS/CAMRY

Product Specifications

Type II, Medium Weight, Class A, Vinyl Coated
Fabric Backed Wallcovering

Width	: 52"/54" (132 cm/137cm)
Total Weight	: 15.0.oz./lin.yard - 466 gr/lin-meter
Backing	: Woven Cotton Backing
Fire Rated	: Class - "A" Tested In Accordance ASTM E-84 Tunnel Test
Tensile Breaking Strength	: 80X75 Pounds
Flame Spread	: 20
Smoke Developed	: 25
Pattern Match	: Random Match
Packaging	: 50 Meter Bolts



US Classification : ASTM-E84 Class - A

CHN Classification : GB8624-2012: Class B

EU Classification : EN 15102 : 2007+A1 : 2011



Anti Microbial Features:

Water based environmentally friendly inks, free of Cadmium, Mercury and Ozone depleting chemicals.

Wall Surface Preparations:

The wall surface must be clean, smooth, stable, even and all in one colour before hanging wallpaper. The wall should be dry enough with a maximum of 8% water absorption. If the other side of the wall is in a bathroom, the surface of the wall must be water proof. If the wall is wet of mouldy, the mould needs to be eliminated completely by brushing fungicide on it which will also make it moisture proof.

Adhesive Applying:

Apply adhesive evenly to the back of the wallpaper, fold and leave it for 5-10 minutes, and let the cloth absorb the adhesive completely. For heavy wallpaper, you can also brush adhesive directly to the wall and wait 5-10 minutes before hanging.

Hanging :

Start to hang from a corner and use a plumb line to ensure the wallpaper is straight and not leaning to one side, if the corner you started from is not straight, use a wiper board to smooth the wallpaper evenly and gently to remove any bubbles. For heavier wallpaper, use a strong glue for the seams. When applying the second strip, it should be applied to edge of the previous one and make sure the design is matched. For plain wallpapers there is no need to match. Overlap the two strips and use a sharp knife to cut in the middle. To make the cutting line straight, use a steel ruler.



Designed in USA



W1156-1



W1156-2



W1156-3



W1156-4



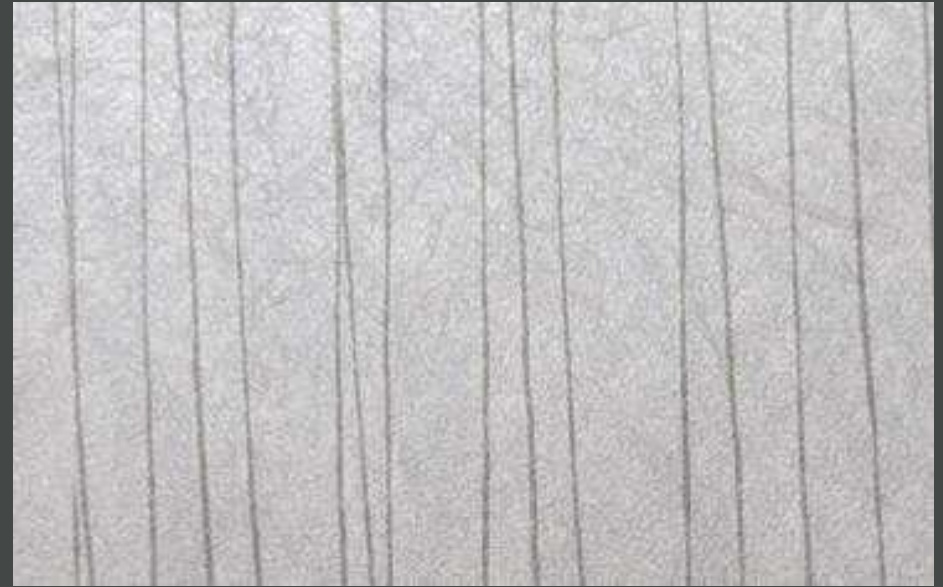
W1156-5



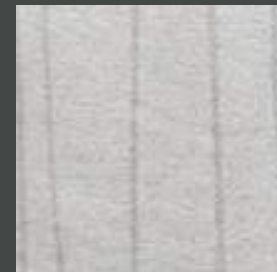
W1156-6



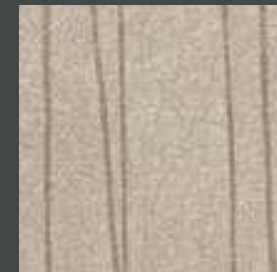
W1156-7



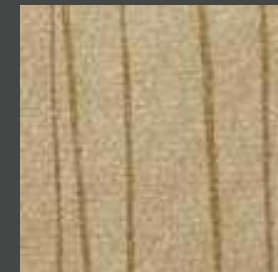
W3717-1



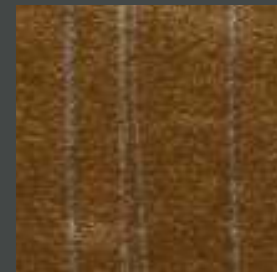
W3717-2



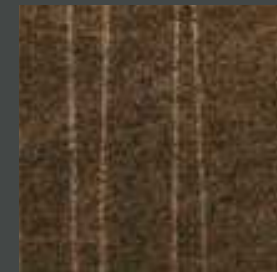
W3717-3



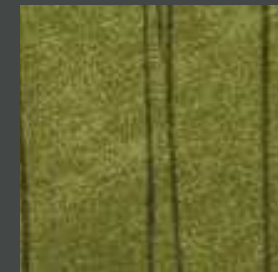
W3717-4



W3717-5



W3717-6



W3717-7



GEOREL



GEOMAT



WALL INDEX™
52"/54" VINYL WALLCOVERINGS

GEOREL/GEOMAT

WALL INDEX™ VINYL WALL COVERINGS

GEOREL/GEOMAT

Product Specifications

Type II, Medium Weight, Class A, Vinyl Coated
Fabric Backed Wallcovering

Width	: 52"/54" (132 cm/137cm)
Total Weight	: 15.0.oz./lin.yard - 466 gr/lin-meter
Backing	: Woven Cotton Backing
Fire Rated	: Class - "A" Tested In Accordance ASTM E-84 Tunnel Test
Tensile Breaking Strength	: 80X75 Pounds
Flame Spread	: 20
Smoke Developed	: 25
Pattern Match	: Random Match
Packaging	: 50 Meter Bolts



US Classification : ASTM-E84 Class - A

CHN Classification : GB8624-2012: Class B

EU Classification : EN 15102 : 2007+A1 : 2011



Anti Microbial Features:

Water based environmentally friendly inks, free of Cadmium, Mercury and Ozone depleting chemicals.

Wall Surface Preparations:

The wall surface must be clean, smooth, stable, even and all in one colour before hanging wallpaper. The wall should be dry enough with a maximum of 8% water absorption. If the other side of the wall is in a bathroom, the surface of the wall must be water proof. If the wall is wet of mouldy, the mould needs to be eliminated completely by brushing fungicide on it which will also make it moisture proof.

Adhesive Applying:

Apply adhesive evenly to the back of the wallpaper, fold and leave it for 5-10 minutes, and let the cloth absorb the adhesive completely. For heavy wallpaper, you can also brush adhesive directly to the wall and wait 5-10 minutes before hanging.

Hanging :

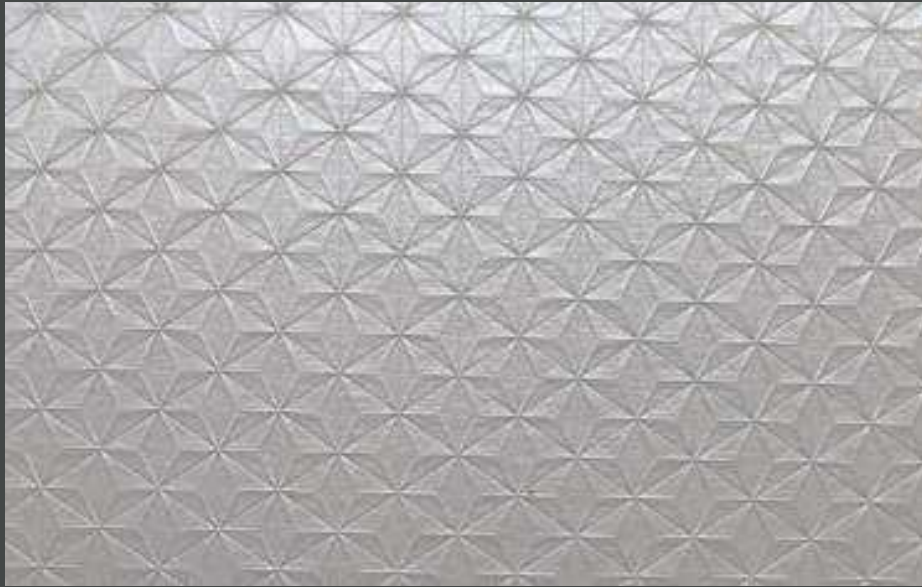
Start to hang from a corner and use a plumb line to ensure the wallpaper is straight and not leaning to one side, if the corner you started from is not straight, use a wiper board to smooth the wallpaper evenly and gently to remove any bubbles. For heavier wallpaper, use a strong glue for the seams. When applying the second strip, it should be applied to edge of the previous one and make sure the design is matched. For plain wallpapers there is no need to match. Overlap the two strips and use a sharp knife to cut in the middle. To make the cutting line straight, use a steel ruler.



Designed in USA

WALL INDEX™ VINYL WALL COVERINGS

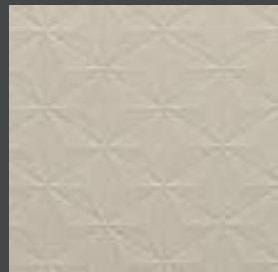
GEOREL



W1393-1



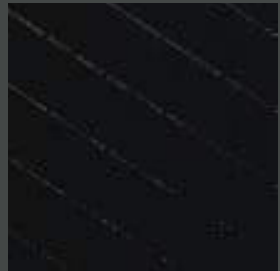
W1393-2



W1393-3



W1393-4



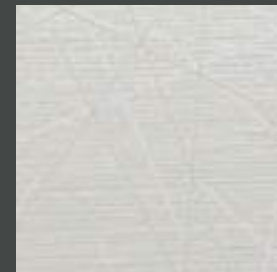
W1393-5

GEOMAT

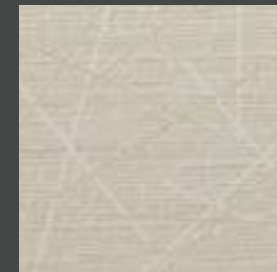
ENVIRONMENTAL WALL COVERING



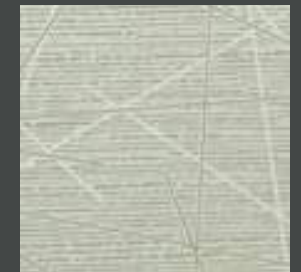
W3891-1



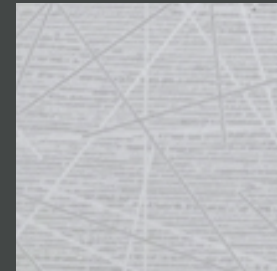
W3891-2



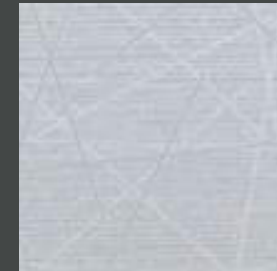
W3891-3



W3891-4



W3891-5



W3891-6



W3891-7



LINTEX



WALL INDEX™
52"/54" VINYL WALLCOVERINGS

ALIXER



LINTEX/ALIXER

WALL INDEX™ VINYL WALL COVERINGS

LINTEX/ALIXER

Product Specifications

Type II, Medium Weight, Class A, Vinyl Coated	
Fabric Backed Wallcovering	
Width	: 52"/54" (132 cm/137cm)
Total Weight	: 20.0.oz./lin.yard - 615 gr/lin-meter
Backing	: Woven Cotton Backing
Fire Rated	: Class - "A" Tested In Accordance ASTM E-84 Tunnel Test
Tensile Breaking Strength	: 80X75 Pounds
Flame Spread	: 20
Smoke Developed	: 25
Pattern Match	: Random Match
Packaging	: 50 Meter Bolts



US Classification : ASTM-E84 Class - A

CHN Classification : GB8624-2012: Class B

EU Classification : EN 15102 : 2007+A1 : 2011



Anti Microbial Features:

Water based environmentally friendly inks, free of Cadmium, Mercury and Ozone depleting chemicals.

Wall Surface Preparations:

The wall surface must be clean, smooth, stable, even and all in one colour before hanging wallpaper. The wall should be dry enough with a maximum of 8% water absorption. If the other side of the wall is in a bathroom, the surface of the wall must be water proof. If the wall is wet of mouldy, the mould needs to be eliminated completely by brushing fungicide on it which will also make it moisture proof.

Adhesive Applying:

Apply adhesive evenly to the back of the wallpaper, fold and leave it for 5-10 minutes, and let the cloth absorb the adhesive completely. For heavy wallpaper, you can also brush adhesive directly to the wall and wait 5-10 minutes before hanging.

Hanging :

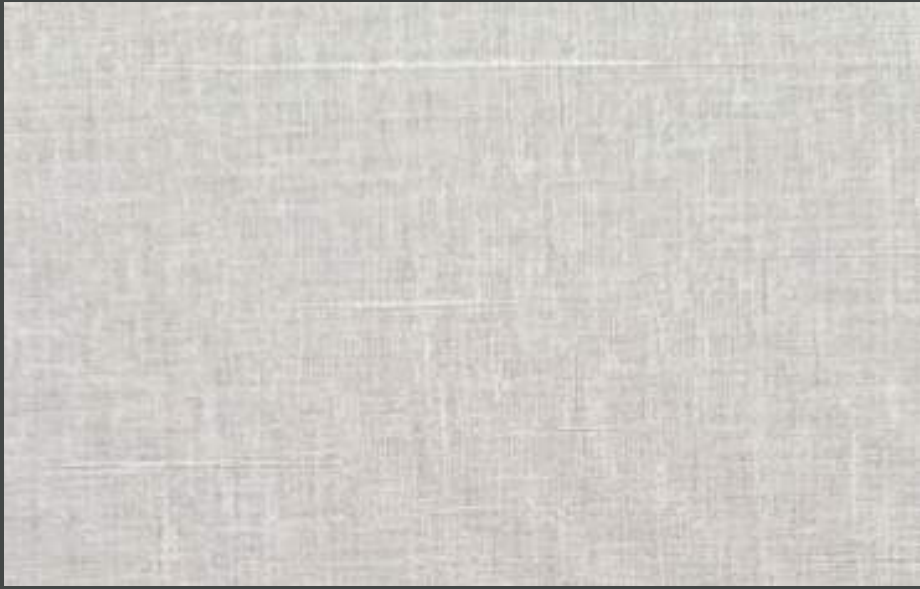
Start to hang from a corner and use a plumb line to ensure the wallpaper is straight and not leaning to one side, if the corner you started from is not straight, use a wiper board to smooth the wallpaper evenly and gently to remove any bubbles. For heavier wallpaper, use a strong glue for the seams. When applying the second strip, it should be applied to edge of the previous one and make sure the design is matched. For plain wallpapers there is no need to match. Overlap the two strips and use a sharp knife to cut in the middle. To make the cutting line straight, use a steel ruler.



Designed in USA

WALL INDEX™ VINYL WALL COVERINGS

LINTEX



W4441-1



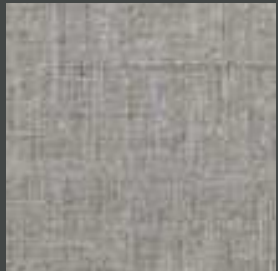
W4441-2



W4441-3



W4441-4



W4441-5



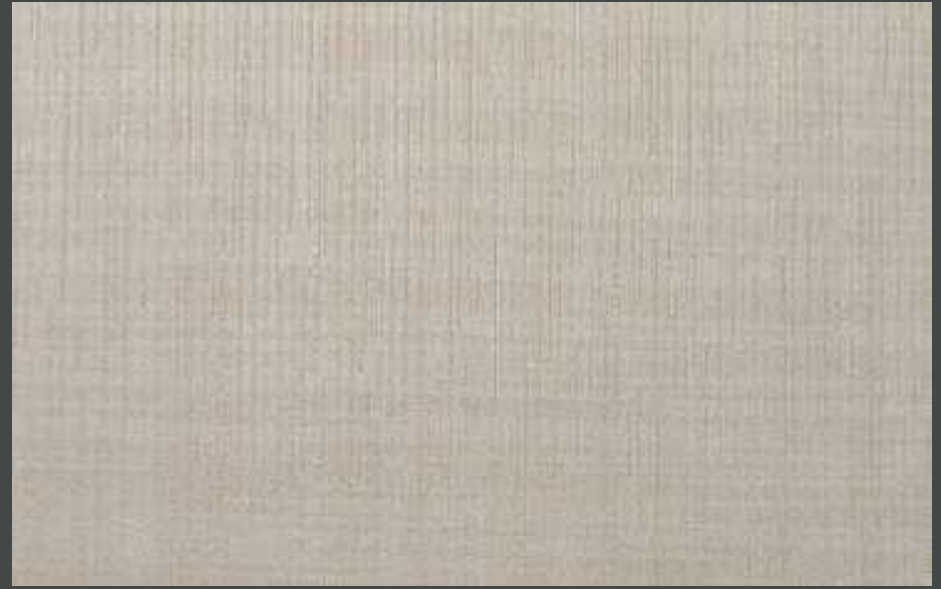
W4441-6



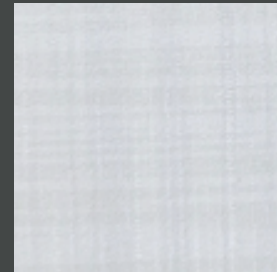
W4441-7

ALIXER

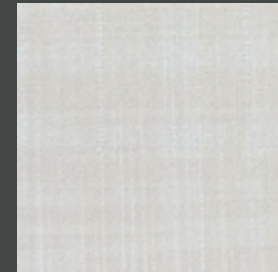
ENVIRONMENTAL WALL COVERING



W4531-1



W4531-2



W4531-3



W4531-4



W4531-5



W4531-6



W4531-7



WRATH



HERITAGE



WALL INDEX™
52"/54" VINYL WALLCOVERINGS

WRATH/HERITAGE

WALL INDEX™ VINYL WALL COVERINGS

WRATH/HERITAGE

Product Specifications

Type II, Medium Weight, Class A, Vinyl Coated
Fabric Backed Wallcovering

Width	: 52"/54" (132 cm/137cm)
Total Weight	: 20.0.oz./lin.yard - 615 gr/lin-meter
Backing	: Woven Cotton Backing
Fire Rated	: Class - "A" Tested In Accordance ASTM E-84 Tunnel Test
Tensile Breaking Strength	: 80X75 Pounds
Flame Spread	: 20
Smoke Developed	: 25
Pattern Match	: Random Match
Packaging	: 50 Meter Bolts



US Classification : ASTM-E84 Class - A

CHN Classification : GB8624-2012: Class B

EU Classification : EN 15102 : 2007+A1 : 2011



Anti Microbial Features:

Water based environmentally friendly inks, free of Cadmium, Mercury and Ozone depleting chemicals.

Wall Surface Preparations:

The wall surface must be clean, smooth, stable, even and all in one colour before hanging wallpaper. The wall should be dry enough with a maximum of 8% water absorption. If the other side of the wall is in a bathroom, the surface of the wall must be water proof. If the wall is wet of mouldy, the mould needs to be eliminated completely by brushing fungicide on it which will also make it moisture proof.

Adhesive Applying:

Apply adhesive evenly to the back of the wallpaper, fold and leave it for 5-10 minutes, and let the cloth absorb the adhesive completely. For heavy wallpaper, you can also brush adhesive directly to the wall and wait 5-10 minutes before hanging.

Hanging :

Start to hang from a corner and use a plumb line to ensure the wallpaper is straight and not leaning to one side, if the corner you started from is not straight, use a wiper board to smooth the wallpaper evenly and gently to remove any bubbles. For heavier wallpaper, use a strong glue for the seams. When applying the second strip, it should be applied to edge of the previous one and make sure the design is matched. For plain wallpapers there is no need to match. Overlap the two strips and use a sharp knife to cut in the middle. To make the cutting line straight, use a steel ruler.



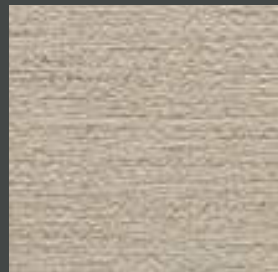
Designed in USA



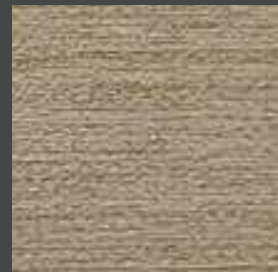
W5319-1



W5319-2



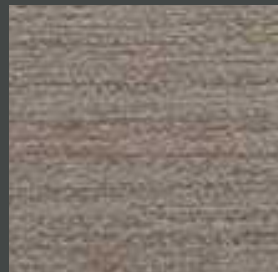
W5319-3



W5319-4



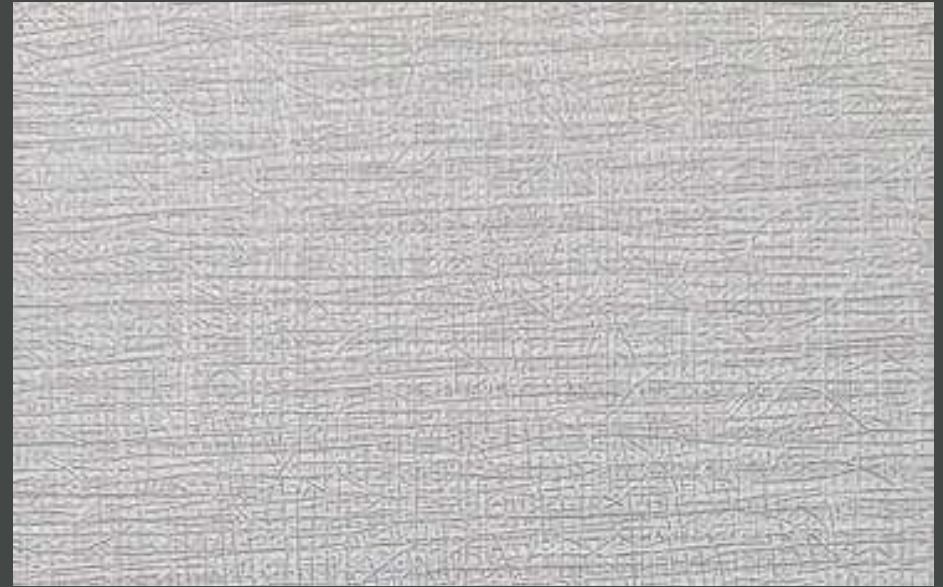
W5319-5



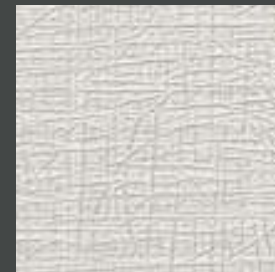
W5319-6



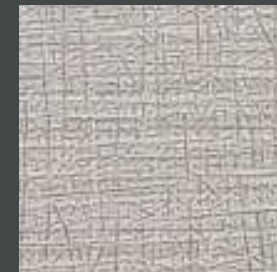
W5319-7



W3777-1



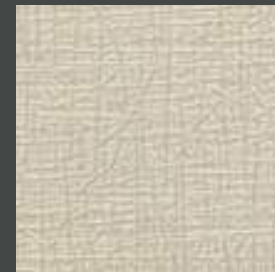
W3777-2



W3777-3



W3777-4



W3777-5



W3777-6



W3777-7



DECORA



MARKER



WALL INDEX™
52"/54" VINYL WALLCOVERINGS

DECORA/MARKER

WALL INDEX™ VINYL WALL COVERINGS

DECORA/MARKER

Product Specifications

Type II, Medium Weight, Class A, Vinyl Coated
Fabric Backed Wallcovering

Width	: 52"/54" (132 cm/137cm)
Total Weight	: 20.0.oz./lin.yard - 615 gr/lin-meter
Backing	: Woven Cotton Backing
Fire Rated	: Class - "A" Tested In Accordance ASTM E-84 Tunnel Test
Tensile Breaking Strength	: 80X75 Pounds
Flame Spread	: 20
Smoke Developed	: 25
Pattern Match	: Random Match
Packaging	: 50 Meter Bolts



US Classification : ASTM-E84 Class - A

CHN Classification : GB8624-2012: Class B

EU Classification : EN 15102 : 2007+A1 : 2011



Anti Microbial Features:

Water based environmentally friendly inks, free of Cadmium, Mercury and Ozone depleting chemicals.

Wall Surface Preparations:

The wall surface must be clean, smooth, stable, even and all in one colour before hanging wallpaper. The wall should be dry enough with a maximum of 8% water absorption. If the other side of the wall is in a bathroom, the surface of the wall must be water proof. If the wall is wet of mouldy, the mould needs to be eliminated completely by brushing fungicide on it which will also make it moisture proof.

Adhesive Applying:

Apply adhesive evenly to the back of the wallpaper, fold and leave it for 5-10 minutes, and let the cloth absorb the adhesive completely. For heavy wallpaper, you can also brush adhesive directly to the wall and wait 5-10 minutes before hanging.

Hanging :

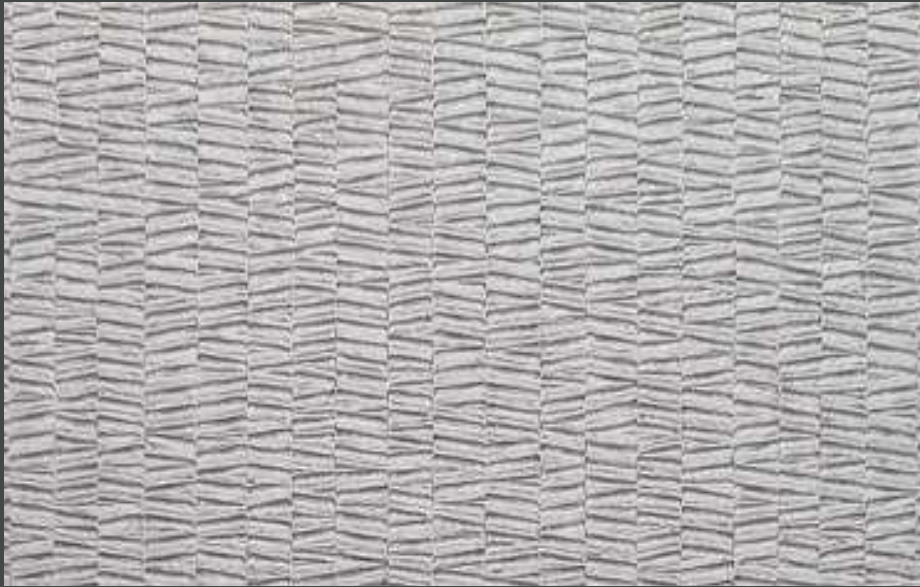
Start to hang from a corner and use a plumb line to ensure the wallpaper is straight and not leaning to one side, if the corner you started from is not straight, use a wiper board to smooth the wallpaper evenly and gently to remove any bubbles. For heavier wallpaper, use a strong glue for the seams. When applying the second strip, it should be applied to edge of the previous one and make sure the design is matched. For plain wallpapers there is no need to match. Overlap the two strips and use a sharp knife to cut in the middle. To make the cutting line straight, use a steel ruler.



Designed in USA

WALL INDEX™ VINYL WALL COVERINGS

DECORA



W3313-1



W3313-2



W3313-3



W3313-4



W3313-5



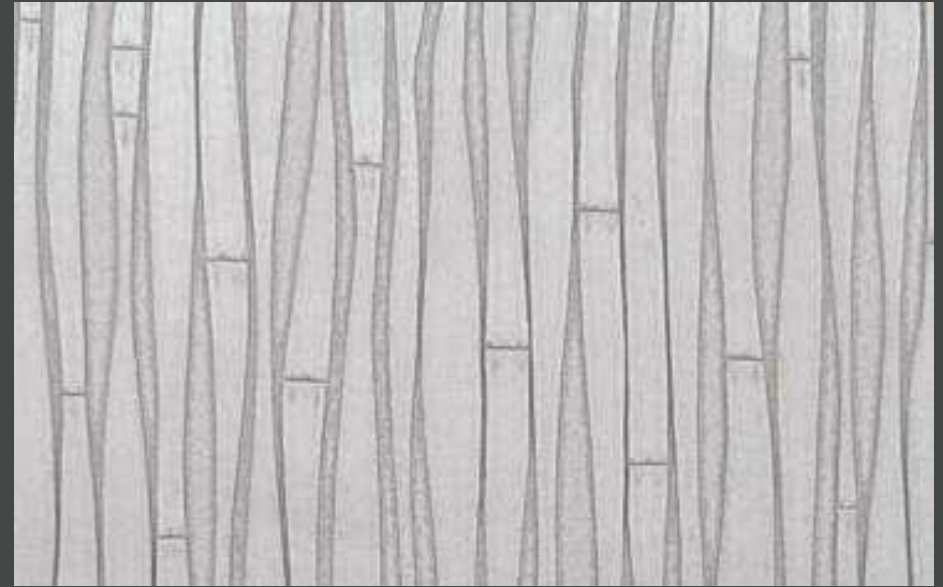
W3313-6



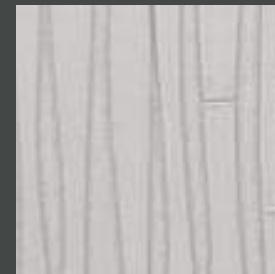
W3313-7

MARKER

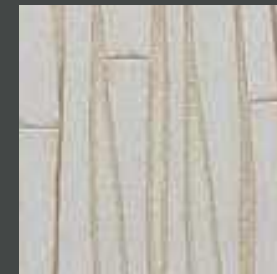
ENVIRONMENTAL WALL COVERING



W3581-1



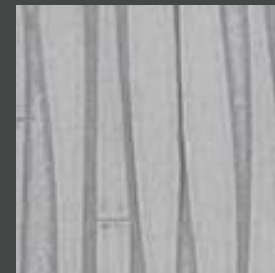
W3581-2



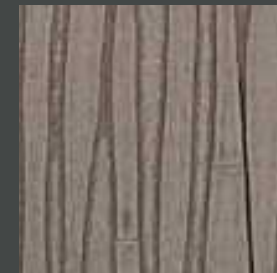
W3581-3



W3581-4



W3581-5



W3581-6



W3581-7



SNAKY



CRONO



WALL INDEX™ 52"/54" VINYL WALLCOVERINGS

SNAKY/CRONO

WALL INDEX™ VINYL WALL COVERINGS

SNAKY/CRONO

Product Specifications

- Type II, Medium Weight, Class A, Vinyl Coated Fabric Backed Wallcovering
- Width : 52"/54" (132 cm/137cm) (SNAKY) 42"/44" (107cm/112cm) (CRONO)
- Total Weight : 20.0.oz./lin.yard (SNAKY) 15.0.oz./lin.yard (CRONO)
- Backing : Woven Cotton Backing
- Fire Rated : Class - "A" Tested In Accordance ASTM E-84 Tunnel Test
- Tensile Breaking Strength : 80X75 Pounds
- Flame Spread : 20
- Smoke Developed : 25
- Pattern Match : Random Match
- Packaging : 50 Meter Bolts



US Classification : ASTM-E84 Class - A

CHN Classification : GB8624-2012: Class B

EU Classification : EN 15102 : 2007+A1 : 2011



Anti Microbial Features:

Water based environmentally friendly inks, free of Cadmium, Mercury and Ozone depleting chemicals.

Wall Surface Preparations:

The wall surface must be clean, smooth, stable, even and all in one colour before hanging wallpaper. The wall should be dry enough with a maximum of 8% water absorption. If the other side of the wall is in a bathroom, the surface of the wall must be water proof. If the wall is wet of moldy, the mould needs to be eliminated completely by brushing fungicide on it which will also make it moisture proof.

Adhesive Applying:

Apply adhesive evenly to the back of the wallpaper, fold and leave it for 5-10 minutes, and let the cloth absorb the adhesive completely. For heavy wallpaper, you can also brush adhesive directly to the wall and wait 5-10 minutes before hanging.

Hanging :

Start to hang from a corner and use a plumb line to ensure the wallpaper is straight and not leaning to one side, if the corner you started from is not straight, use a wiper board to smooth the wallpaper evenly and gently to remove any bubbles. For heavier wallpaper, use a strong glue for the seams. When applying the second strip, it should be applied to edge of the previous one and make sure the design is matched. For plain wallpapers there is no need to match. Overlap the two strips and use a sharp knife to cut in the middle. To make the cutting line straight, use a steel ruler.



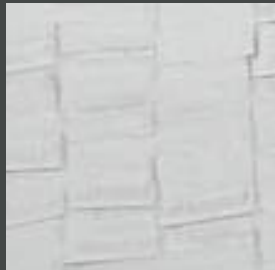
Designed in USA

WALL INDEX™ VINYL WALL COVERINGS

SNAKY



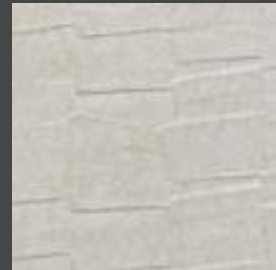
W3322-1



W3322-2



W3322-3



W3322-4



W3322-5



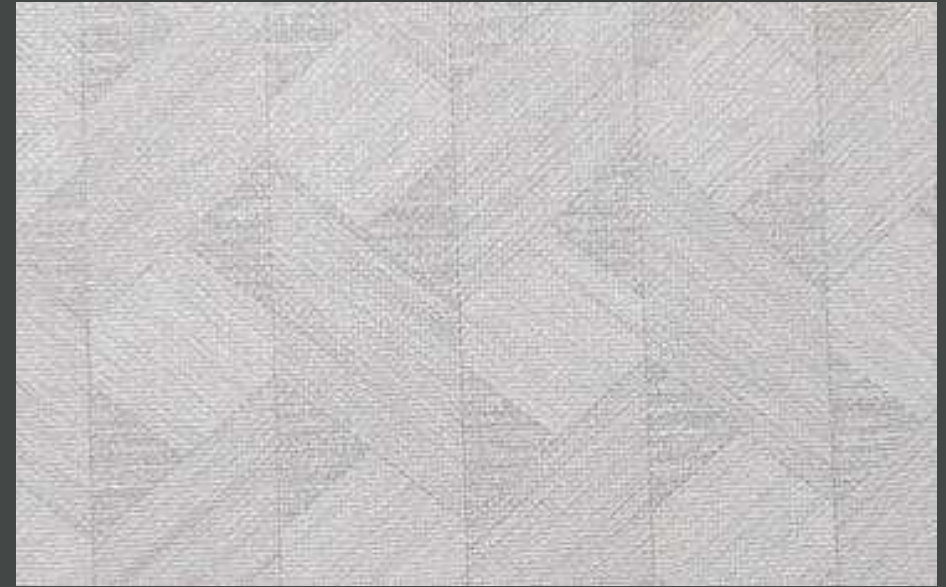
W3322-6



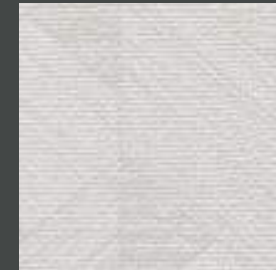
W3322-7

CRONO

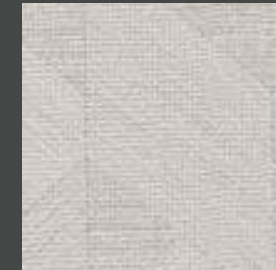
ENVIRONMENTAL WALL COVERING



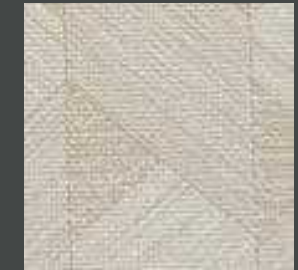
W4631-1



W4631-2



W4631-3



W4631-4



W4631-5



W4631-6



W4631-7



FEBRYA



WILSON



WALL INDEX™
42" / 44" VINYL WALLCOVERINGS

FEBRYA/WILSON

WALL INDEX™ VINYL WALL COVERINGS

FEBRYA/WILSON

Product Specifications

Type II, Medium Weight, Class A, Vinyl Coated
Fabric Backed Wallcovering

Width	: 42"/44" (107 cm/112cm)
Total Weight	: 20.0.oz./lin.yard - 565 gr/lin-meter
Backing	: Woven Cotton Backing
Fire Rated	: Class - "A" Tested In Accordance ASTM E-84 Tunnel Test
Tensile Breaking Strength	: 80X75 Pounds
Flame Spread	: 20
Smoke Developed	: 25
Pattern Match	: Random Match
Packaging	: 50 Meter Bolts



US Classification : ASTM-E84 Class - A

CHN Classification : GB8624-2012: Class B

EU Classification : EN 15102 : 2007+A1 : 2011



Anti Microbial Features:

Water based environmentally friendly inks, free of Cadmium, Mercury and Ozone depleting chemicals.

Wall Surface Preparations:

The wall surface must be clean, smooth, stable, even and all in one colour before hanging wallpaper. The wall should be dry enough with a maximum of 8% water absorption. If the other side of the wall is in a bathroom, the surface of the wall must be water proof. If the wall is wet of mouldy, the mould needs to be eliminated completely by brushing fungicide on it which will also make it moisture proof.

Adhesive Applying:

Apply adhesive evenly to the back of the wallpaper, fold and leave it for 5-10 minutes, and let the cloth absorb the adhesive completely. For heavy wallpaper, you can also brush adhesive directly to the wall and wait 5-10 minutes before hanging.

Hanging :

Start to hang from a corner and use a plumb line to ensure the wallpaper is straight and not leaning to one side, if the corner you started from is not straight, use a wiper board to smooth the wallpaper evenly and gently to remove any bubbles. For heavier wallpaper, use a strong glue for the seams. When applying the second strip, it should be applied to edge of the previous one and make sure the design is matched. For plain wallpapers there is no need to match. Overlap the two strips and use a sharp knife to cut in the middle. To make the cutting line straight, use a steel ruler.



Designed in USA

WALL INDEX™ VINYL WALL COVERINGS

FEBRYA



W4112-1



W4112-2



W4112-3



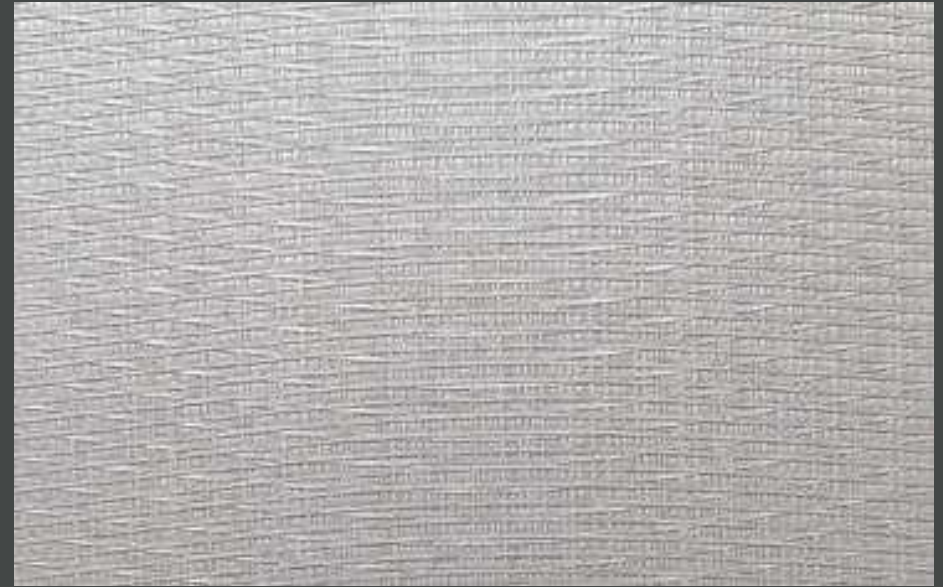
W4112-4



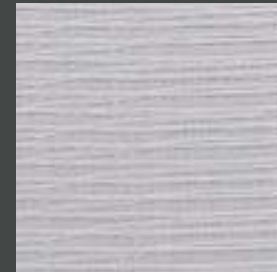
W4112-5

WILSON

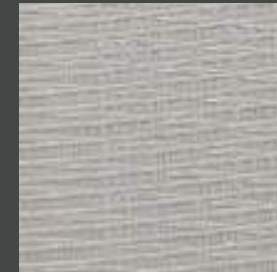
ENVIRONMENTAL WALL COVERING



W4424-1



W4424-2



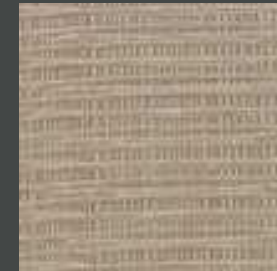
W4424-3



W4424-4



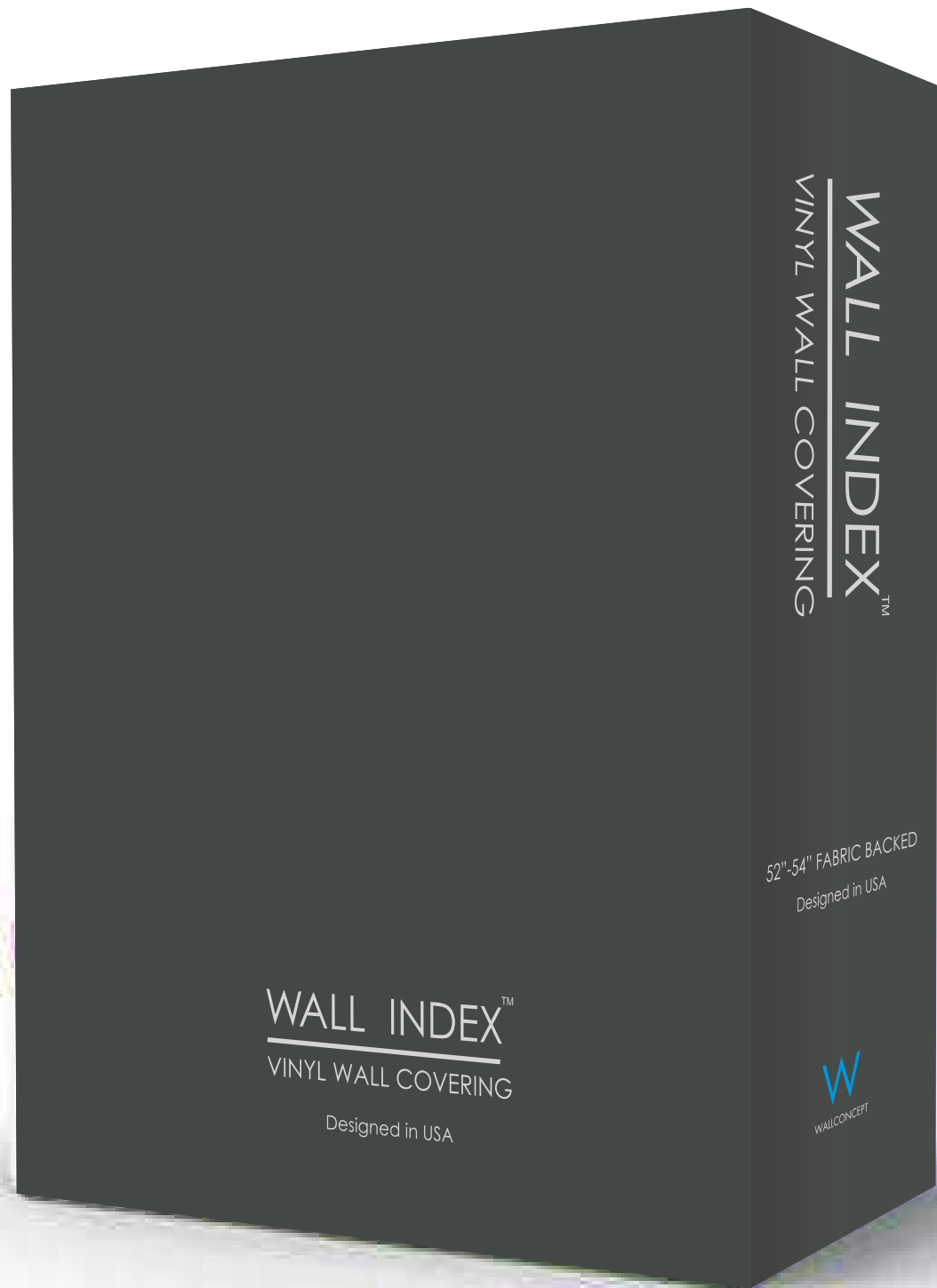
W4424-5




W4424-6





W4424-7



WALLCONCEPT

 G-11, Lower Ground Floor, Kalindi Kunj Market,
Okhla, New Delhi - 110025, India.

 Phone : 011-41616326, 9810556326

 For Order Query : 7303600801

 E-mail : wallconceptdelhi@gmail.com

 Website : www.wallconcept.co.in